

Product datasheet for **TP762626**

KLHDC8A (NM_018203) Human Recombinant Protein

Product data:

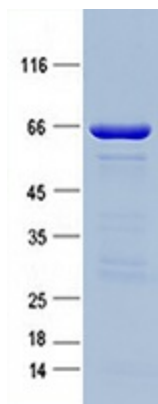
Product Type:	Recombinant Proteins
Description:	Purified recombinant protein of Human kelch domain containing 8A (KLHDC8A), full length, with N-terminal GST and C-terminal His tag, expressed in E.coli, 50ug
Species:	Human
Expression Host:	E. coli
Expression cDNA Clone or AA Sequence:	A DNA sequence encoding the region full length of KLHDC8A
Tag:	N-GST and C-HIS
Predicted MW:	38.9 kDa
Concentration:	>0.05 µg/µL as determined by microplate BCA method
Purity:	> 80% as determined by SDS-PAGE and Coomassie blue staining
Buffer:	50 mM Tris-HCl, pH 8.0, 8 M urea
Note:	For testing in cell culture applications, please filter before use. Note that you may experience some loss of protein during the filtration process.
Storage:	Store at -80°C after receiving vials.
Stability:	Stable for 12 months from the date of receipt of the product under proper storage and handling conditions. Avoid repeated freeze-thaw cycles.
RefSeq:	NP_060673
Locus ID:	55220
UniProt ID:	Q8IYD2 , A0A024R981
RefSeq Size:	3044
Cytogenetics:	1q32.1
RefSeq ORF:	1050



[View online »](#)

Summary:

This gene encodes a kelch domain-containing protein which is upregulated in cancer. Upregulated expression of the encoded protein may provide an alternative pathway for tumors to maintain aggressiveness in the absence of epidermal growth factor receptor dependence. Alternative splicing results in multiple transcript variants. [provided by RefSeq, Dec 2012]

Product images:

Purified recombinant protein KLHDC8A was analyzed by SDS-PAGE gel and Coomassie Blue Staining.