

Product datasheet for **TP762622**

alpha 2 Glycine Receptor (GLRA2) (NM_002063) Human Recombinant Protein

Product data:

Product Type:	Recombinant Proteins
Description:	Purified recombinant protein of Human glycine receptor, alpha 2 (GLRA2), transcript variant 1, full length, with N-terminal GST and C-terminal His tag, expressed in E.coli, 50ug
Species:	Human
Expression Host:	E. coli
Expression cDNA Clone or AA Sequence:	A DNA sequence encoding the region full length of GLRA2
Tag:	N-GST and C-HIS
Predicted MW:	52 kDa
Concentration:	>0.05 µg/µL as determined by microplate BCA method
Purity:	> 80% as determined by SDS-PAGE and Coomassie blue staining
Buffer:	50 mM Tris-HCl, pH 8.0, 8 M urea
Note:	For testing in cell culture applications, please filter before use. Note that you may experience some loss of protein during the filtration process.
Storage:	Store at -80°C after receiving vials.
Stability:	Stable for 12 months from the date of receipt of the product under proper storage and handling conditions. Avoid repeated freeze-thaw cycles.
RefSeq:	NP_002054
Locus ID:	2742
UniProt ID:	P23416
RefSeq Size:	3458
Cytogenetics:	Xp22.2
RefSeq ORF:	1356
Synonyms:	GLR



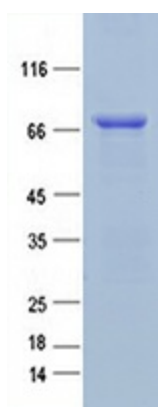
[View online »](#)

Summary: The glycine receptor consists of two subunits, alpha and beta, and acts as a pentamer. The protein encoded by this gene is an alpha subunit and can bind strychnine. Several transcript variants encoding different isoforms have been found for this gene.[provided by RefSeq, Jan 2010]

Protein Families: Druggable Genome, Ion Channels: Cys-loop Receptors, Transmembrane

Protein Pathways: Neuroactive ligand-receptor interaction

Product images:



Purified recombinant protein GLRA2 was analyzed by SDS-PAGE gel and Coomassie Blue Staining.