

Product datasheet for **TP762607**

MMP1 (NM_002421) Human Recombinant Protein

Product data:

Product Type:	Recombinant Proteins
Description:	Purified recombinant protein of Human matrix metalloproteinase 1 (interstitial collagenase) (MMP1), transcript variant 1, full length, with N-terminal GST and C-terminal His tag, expressed in E.coli, 50ug
Species:	Human
Expression Host:	E. coli
Expression cDNA Clone or AA Sequence:	A DNA sequence encoding the region full length of MMP1
Tag:	N-GST and C-HIS
Predicted MW:	54 kDa
Concentration:	>0.05 µg/µL as determined by microplate BCA method
Purity:	> 80% as determined by SDS-PAGE and Coomassie blue staining
Buffer:	50 mM Tris-HCl, pH 8.0, 8 M urea
Note:	For testing in cell culture applications, please filter before use. Note that you may experience some loss of protein during the filtration process.
Storage:	Store at -80°C after receiving vials.
Stability:	Stable for 12 months from the date of receipt of the product under proper storage and handling conditions. Avoid repeated freeze-thaw cycles.
RefSeq:	NP_002412
Locus ID:	4312
UniProt ID:	P03956 , Q53G95
RefSeq Size:	2081
Cytogenetics:	11q22.2
RefSeq ORF:	1407
Synonyms:	CLG; CLGN


[View online »](#)

Summary:

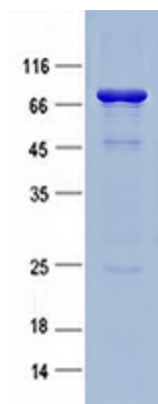
This gene encodes a member of the peptidase M10 family of matrix metalloproteinases (MMPs). Proteins in this family are involved in the breakdown of extracellular matrix in normal physiological processes, such as embryonic development, reproduction, and tissue remodeling, as well as in disease processes, such as arthritis and metastasis. The encoded preproprotein is proteolytically processed to generate the mature protease. This secreted protease breaks down the interstitial collagens, including types I, II, and III. The gene is part of a cluster of MMP genes on chromosome 11. Mutations in this gene are associated with chronic obstructive pulmonary disease (COPD). Alternative splicing results in multiple transcript variants, at least one of which encodes an isoform that is proteolytically processed. [provided by RefSeq, Jan 2016]

Protein Families:

Druggable Genome, Protease, Secreted Protein

Protein Pathways:

Bladder cancer, Pathways in cancer, PPAR signaling pathway

Product images:


Purified recombinant protein MMP1 was analyzed by SDS-PAGE gel and Coomassie Blue Staining.