

Product datasheet for **TP762599**

Carbohydrate sulfotransferase 1 (CHST1) (NM_003654) Human Recombinant Protein

Product data:

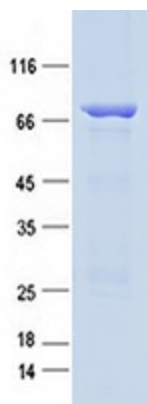
Product Type:	Recombinant Proteins
Description:	Purified recombinant protein of Human carbohydrate (keratan sulfate Gal-6) sulfotransferase 1 (CHST1), full length, with N-terminal GST and C-terminal His tag, expressed in E.coli, 50ug
Species:	Human
Expression Host:	E. coli
Expression cDNA Clone or AA Sequence:	A DNA sequence encoding the region full length of CHST1
Tag:	N-GST and C-HIS
Predicted MW:	46.7 kDa
Concentration:	>0.05 µg/µL as determined by microplate BCA method
Purity:	> 80% as determined by SDS-PAGE and Coomassie blue staining
Buffer:	50 mM Tris-HCl, pH 8.0, 8 M urea
Note:	For testing in cell culture applications, please filter before use. Note that you may experience some loss of protein during the filtration process.
Storage:	Store at -80°C after receiving vials.
Stability:	Stable for 12 months from the date of receipt of the product under proper storage and handling conditions. Avoid repeated freeze-thaw cycles.
RefSeq:	NP_003645
Locus ID:	8534
UniProt ID:	O43916
RefSeq Size:	3947
Cytogenetics:	11p11.2
RefSeq ORF:	1233
Synonyms:	C6ST; GST-1; KS6ST; KSGal6ST; KSST
Summary:	This locus encodes a member of the keratin sulfotransferase family of proteins. The encoded enzyme catalyzes the sulfation of the proteoglycan keratin. [provided by RefSeq, Aug 2011]
Protein Families:	Transmembrane



[View online »](#)

Protein Pathways: Keratan sulfate biosynthesis, Metabolic pathways

Product images:



Purified recombinant protein CHST1 was analyzed by SDS-PAGE gel and Coomassie Blue Staining.