

Product datasheet for **TP762596**

Apelin (APLN) (NM_017413) Human Recombinant Protein

Product data:

Product Type:	Recombinant Proteins
Description:	Purified recombinant protein of Human apelin (APLN), full length, with N-terminal GST and C-terminal His tag, expressed in E.coli, 50ug
Species:	Human
Expression Host:	E. coli
Expression cDNA Clone or AA Sequence:	A DNA sequence encoding the region full length of APLN
Tag:	N-GST and C-HIS
Predicted MW:	8.6 kDa
Concentration:	>0.05 µg/µL as determined by microplate BCA method
Purity:	> 80% as determined by SDS-PAGE and Coomassie blue staining
Buffer:	50 mM Tris-HCl, pH 8.0, 8 M urea
Note:	For testing in cell culture applications, please filter before use. Note that you may experience some loss of protein during the filtration process.
Storage:	Store at -80°C after receiving vials.
Stability:	Stable for 12 months from the date of receipt of the product under proper storage and handling conditions. Avoid repeated freeze-thaw cycles.
RefSeq:	NP_059109
Locus ID:	8862
UniProt ID:	Q9ULZ1
RefSeq Size:	3238
Cytogenetics:	Xq26.1
RefSeq ORF:	231
Synonyms:	APEL; XNPEP2



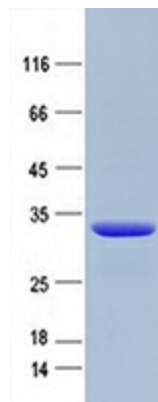
[View online »](#)

Summary:

This gene encodes a peptide that functions as an endogenous ligand for the G-protein coupled apelin receptor. The encoded preproprotein is proteolytically processed into biologically active C-terminal peptide fragments. These peptide fragments activate different tissue specific signaling pathways that regulate diverse biological functions including fluid homeostasis, cardiovascular function and insulin secretion. This protein also functions as a coreceptor for the human immunodeficiency virus 1. [provided by RefSeq, Feb 2016]

Protein Families:

Druggable Genome, Secreted Protein

Product images:

Purified recombinant protein APLN was analyzed by SDS-PAGE gel and Coomassie Blue Staining.