

## Product datasheet for **TP762588**

### **MAGEB3 (NM\_002365) Human Recombinant Protein**

#### **Product data:**

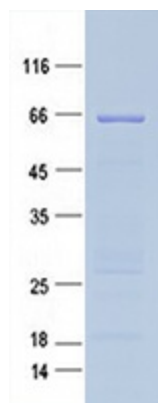
<b>Product Type:</b>	Recombinant Proteins
<b>Description:</b>	Purified recombinant protein of Human melanoma antigen family B, 3 (MAGEB3), full length, with N-terminal GST and C-terminal His tag, expressed in E.coli, 50ug
<b>Species:</b>	Human
<b>Expression Host:</b>	E. coli
<b>Expression cDNA Clone or AA Sequence:</b>	A DNA sequence encoding the region full length of MAGEB3
<b>Tag:</b>	N-GST and C-HIS
<b>Predicted MW:</b>	39.2 kDa
<b>Concentration:</b>	>0.05 µg/µL as determined by microplate BCA method
<b>Purity:</b>	> 80% as determined by SDS-PAGE and Coomassie blue staining
<b>Buffer:</b>	50 mM Tris-HCl, pH 8.0, 8 M urea
<b>Note:</b>	For testing in cell culture applications, please filter before use. Note that you may experience some loss of protein during the filtration process.
<b>Storage:</b>	Store at -80°C after receiving vials.
<b>Stability:</b>	Stable for 12 months from the date of receipt of the product under proper storage and handling conditions. Avoid repeated freeze-thaw cycles.
<b>RefSeq:</b>	<a href="#">NP_002356</a>
<b>Locus ID:</b>	4114
<b>UniProt ID:</b>	<a href="#">O15480</a>
<b>RefSeq Size:</b>	2310
<b>Cytogenetics:</b>	Xp21.2
<b>RefSeq ORF:</b>	1038
<b>Synonyms:</b>	CT3.5



[View online »](#)

**Summary:**

This gene is a MAGE-B subfamily member of the MAGE gene family. MAGE family member proteins direct the expression of tumor antigens recognized on a human melanoma by autologous cytolytic T lymphocytes. There are two known clusters of MAGE genes on chromosome X. The members of the MAGE-A subfamily are located in the Xq28 region, while the members of the MAGE-B subfamily are clustered in the Xp21 region. [provided by RefSeq, Jul 2008]

**Product images:**

Purified recombinant protein MAGEB3 was analyzed by SDS-PAGE gel and Coomassie Blue Staining.