

## Product datasheet for **TP762557**

### Fc epsilon RI (FCER1A) (NM\_002001) Human Recombinant Protein

#### Product data:

Product Type:	Recombinant Proteins
Description:	Purified recombinant protein of Human Fc fragment of IgE, high affinity I, receptor for, alpha polypeptide (FCER1A), 50ug
Species:	Human
Expression Host:	E. coli
Expression cDNA Clone or AA Sequence:	A DNA sequence encoding the region full length of FCER1A
Tag:	N-GST and C-HIS
Predicted MW:	29.6 kDa
Concentration:	>0.05 µg/µL as determined by microplate BCA method
Purity:	> 80% as determined by SDS-PAGE and Coomassie blue staining
Buffer:	50mM Tris, pH8.0, 8M Urea
Storage:	Store at -80°C after receiving vials.
Stability:	Stable for at least 1 year from receipt of products under proper storage and handling conditions. Avoid repeated freeze-thaw cycles.
RefSeq:	<a href="#">NP_001992</a>
Locus ID:	2205
UniProt ID:	<a href="#">P12319</a>
RefSeq Size:	1198
Cytogenetics:	1q23.2
RefSeq ORF:	771
Synonyms:	FCE1A; FcERI



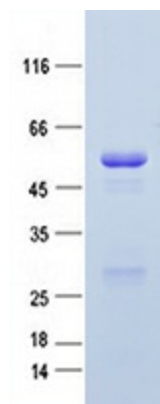
[View online »](#)

**Summary:** The immunoglobulin epsilon receptor (IgE receptor) is the initiator of the allergic response. When two or more high-affinity IgE receptors are brought together by allergen-bound IgE molecules, mediators such as histamine that are responsible for allergy symptoms are released. This receptor is comprised of an alpha subunit, a beta subunit, and two gamma subunits. The protein encoded by this gene represents the alpha subunit. [provided by RefSeq, Aug 2011]

**Protein Families:** Transmembrane

**Protein Pathways:** Asthma, Fc epsilon RI signaling pathway

**Product images:**



Coomassie blue staining of purified FCER1A protein (Cat #TP762557). The protein was produced from E.coli.