

Product datasheet for **TP762547**

Chk1 (CHEK1) (NM_001274) Human Recombinant Protein

Product data:

Product Type:	Recombinant Proteins
Description:	Purified recombinant protein of Human CHK1 checkpoint homolog (S.pombe) (CHEK1), transcript variant 1, 50ug
Species:	Human
Expression Host:	E. coli
Expression cDNA Clone or AA Sequence:	A DNA sequence encoding the region full length of CHEK1
Tag:	N-GST and C-HIS
Predicted MW:	54.4 kDa
Concentration:	>0.05 µg/µL as determined by microplate BCA method
Purity:	> 80% as determined by SDS-PAGE and Coomassie blue staining
Buffer:	50mM Tris, pH8.0, 8M Urea
Storage:	Store at -80°C after receiving vials.
Stability:	Stable for at least 1 year from receipt of products under proper storage and handling conditions. Avoid repeated freeze-thaw cycles.
RefSeq:	NP_001265
Locus ID:	1111
UniProt ID:	Q14757
RefSeq Size:	3517
Cytogenetics:	11q24.2
RefSeq ORF:	1428
Synonyms:	CHK1



[View online »](#)

Summary:

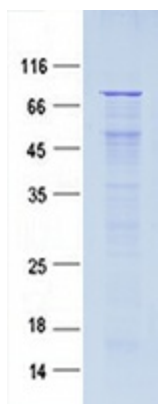
The protein encoded by this gene belongs to the Ser/Thr protein kinase family. It is required for checkpoint mediated cell cycle arrest in response to DNA damage or the presence of unreplicated DNA. This protein acts to integrate signals from ATM and ATR, two cell cycle proteins involved in DNA damage responses, that also associate with chromatin in meiotic prophase I. Phosphorylation of CDC25A protein phosphatase by this protein is required for cells to delay cell cycle progression in response to double-strand DNA breaks. Several alternatively spliced transcript variants have been found for this gene. [provided by RefSeq, Oct 2011]

Protein Families:

Druggable Genome, Protein Kinase, Stem cell - Pluripotency

Protein Pathways:

Cell cycle, p53 signaling pathway

Product images:

Coomassie blue staining of purified CHEK1 protein (Cat #TP762547). The protein was produced from E.coli.