

## Product datasheet for **TP762546**

### ALS2CR2 (STRADB) (NM\_018571) Human Recombinant Protein

#### Product data:

Product Type:	Recombinant Proteins
Description:	Purified recombinant protein of Human STE20-related kinase adaptor beta (STRADB), transcript variant 1, 50ug
Species:	Human
Expression Host:	E. coli
Expression cDNA Clone or AA Sequence:	A DNA sequence encoding the region full length of STRADB
Tag:	N-GST and C-HIS
Predicted MW:	47 kDa
Concentration:	>0.05 µg/µL as determined by microplate BCA method
Purity:	> 80% as determined by SDS-PAGE and Coomassie blue staining
Buffer:	50mM Tris, pH8.0, 8M Urea
Storage:	Store at -80°C after receiving vials.
Stability:	Stable for at least 1 year from receipt of products under proper storage and handling conditions. Avoid repeated freeze-thaw cycles.
RefSeq:	<u><a href="#">NP_061041</a></u>
Locus ID:	55437
UniProt ID:	<u><a href="#">Q9C0K7</a></u>
RefSeq Size:	2300
Cytogenetics:	2q33.1
RefSeq ORF:	1254
Synonyms:	ALS2CR2; CALS-21; ILPIP; ILPIPA; PAPK; PRO1038



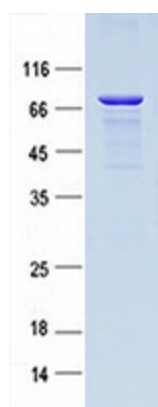
[View online »](#)

**Summary:**

This gene encodes a protein that belongs to the serine/threonine protein kinase STE20 subfamily. One of the active site residues in the protein kinase domain of this protein is altered, and it is thus a pseudokinase. This protein is a component of a complex involved in the activation of serine/threonine kinase 11, a master kinase that regulates cell polarity and energy-generating metabolism. This complex regulates the relocation of this kinase from the nucleus to the cytoplasm, and it is essential for G1 cell cycle arrest mediated by this kinase. The protein encoded by this gene can also interact with the X chromosome-linked inhibitor of apoptosis protein, and this interaction enhances the anti-apoptotic activity of this protein via the JNK1 signal transduction pathway. Two pseudogenes, located on chromosomes 1 and 7, have been found for this gene. Alternatively spliced transcript variants encoding different isoforms have been found for this gene. [provided by RefSeq, May 2011]

**Protein Families:**

Druggable Genome, Protein Kinase

**Product images:**


Coomassie blue staining of purified STRADB protein (Cat #TP762546). The protein was produced from E.coli.