

## Product datasheet for **TP762541**

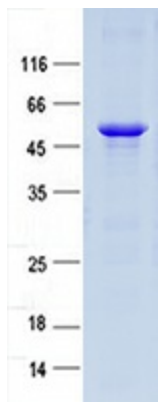
### **GSG1 (NM\_031289) Human Recombinant Protein**

#### **Product data:**

<b>Product Type:</b>	Recombinant Proteins
<b>Description:</b>	Purified recombinant protein of Human germ cell associated 1 (GSG1), transcript variant 1, 50ug
<b>Species:</b>	Human
<b>Expression Host:</b>	E. coli
<b>Expression cDNA Clone or AA Sequence:</b>	A DNA sequence encoding the region full length of GSG1
<b>Tag:</b>	N-GST and C-HIS
<b>Predicted MW:</b>	31.1 kDa
<b>Concentration:</b>	>0.05 µg/µL as determined by microplate BCA method
<b>Purity:</b>	> 80% as determined by SDS-PAGE and Coomassie blue staining
<b>Buffer:</b>	50mM Tris, pH8.0, 8M Urea
<b>Storage:</b>	Store at -80°C after receiving vials.
<b>Stability:</b>	Stable for at least 1 year from receipt of products under proper storage and handling conditions. Avoid repeated freeze-thaw cycles.
<b>RefSeq:</b>	<a href="#">NP_112579</a>
<b>Locus ID:</b>	83445
<b>UniProt ID:</b>	<a href="#">Q2KHT4</a> , <a href="#">F1T0A0</a> , <a href="#">F1T0A1</a>
<b>RefSeq Size:</b>	2668
<b>Cytogenetics:</b>	12p13.1
<b>RefSeq ORF:</b>	846
<b>Summary:</b>	May cause the redistribution of PAPOLB from the cytosol to the endoplasmic reticulum. [UniProtKB/Swiss-Prot Function]
<b>Protein Families:</b>	Transmembrane



[View online »](#)

**Product images:**

Coomassie blue staining of purified GSG1 protein (Cat #TP762541). The protein was produced from E.coli.