

## Product datasheet for **TP762533**

### **CORD2 (CRX) (NM\_000554) Human Recombinant Protein**

#### **Product data:**

<b>Product Type:</b>	Recombinant Proteins
<b>Description:</b>	Purified recombinant protein of Human cone-rod homeobox (CRX), 50ug
<b>Species:</b>	Human
<b>Expression Host:</b>	E. coli
<b>Expression cDNA Clone or AA Sequence:</b>	A DNA sequence encoding the region full length of CRX
<b>Tag:</b>	N-GST and C-HIS
<b>Predicted MW:</b>	32.3 kDa
<b>Concentration:</b>	>0.05 µg/µL as determined by microplate BCA method
<b>Purity:</b>	> 80% as determined by SDS-PAGE and Coomassie blue staining
<b>Buffer:</b>	50mM Tris, pH8.0, 8M Urea
<b>Storage:</b>	Store at -80°C after receiving vials.
<b>Stability:</b>	Stable for at least 1 year from receipt of products under proper storage and handling conditions. Avoid repeated freeze-thaw cycles.
<b>RefSeq:</b>	<a href="#">NP_000545</a>
<b>Locus ID:</b>	1406
<b>UniProt ID:</b>	<a href="#">O43186</a>
<b>RefSeq Size:</b>	4482
<b>Cytogenetics:</b>	19q13.33
<b>RefSeq ORF:</b>	897
<b>Synonyms:</b>	CORD2; CRD; LCA7; OTX3



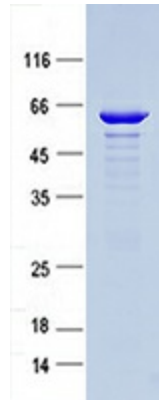
[View online »](#)

**Summary:**

The protein encoded by this gene is a photoreceptor-specific transcription factor which plays a role in the differentiation of photoreceptor cells. This homeodomain protein is necessary for the maintenance of normal cone and rod function. Mutations in this gene are associated with photoreceptor degeneration, Leber congenital amaurosis type III and the autosomal dominant cone-rod dystrophy 2. Several alternatively spliced transcript variants of this gene have been described, but the full-length nature of some variants has not been determined. [provided by RefSeq, Jul 2008]

**Protein Families:**

Druggable Genome, Transcription Factors

**Product images:**

Coomassie blue staining of purified CRX protein (Cat #TP762533). The protein was produced from E.coli.