

## Product datasheet for **TP762521**

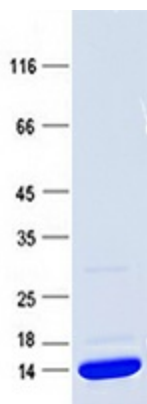
### **LYRM4 (NM\_020408) Human Recombinant Protein**

#### **Product data:**

<b>Product Type:</b>	Recombinant Proteins
<b>Description:</b>	Purified recombinant protein of Human LYR motif containing 4 (LYRM4), transcript variant 1, full length, 50ug
<b>Species:</b>	Human
<b>Expression Host:</b>	E. coli
<b>Expression cDNA Clone or AA Sequence:</b>	A DNA sequence encoding the region full length of LYRM4
<b>Tag:</b>	N-His
<b>Predicted MW:</b>	10.7 kDa
<b>Concentration:</b>	>0.05 µg/µL as determined by microplate BCA method
<b>Purity:</b>	> 80% as determined by SDS-PAGE and Coomassie blue staining
<b>Buffer:</b>	50mM Tris, pH8.0, 8M Urea
<b>Storage:</b>	Store at -80°C after receiving vials.
<b>Stability:</b>	Stable for at least 1 year from receipt of products under proper storage and handling conditions. Avoid repeated freeze-thaw cycles.
<b>RefSeq:</b>	<a href="#">NP_065141</a>
<b>Locus ID:</b>	57128
<b>UniProt ID:</b>	<a href="#">Q9HD34</a>
<b>RefSeq Size:</b>	1514
<b>Cytogenetics:</b>	6p25.1
<b>RefSeq ORF:</b>	273
<b>Synonyms:</b>	C6orf149; CGI-203; COXPD19; ISD11
<b>Summary:</b>	The protein encoded by this gene is found in both mitochondria and the nucleus, where it binds cysteine desulfurase and helps free inorganic sulfur for Fe/S clusters. Disruption of this gene negatively impacts mitochondrial and cytosolic iron homeostasis. [provided by RefSeq, Sep 2016]



[View online »](#)

**Product images:**

Coomassie blue staining of purified LYRM4 protein (Cat #TP762521). The protein was produced from E.coli.