

Product datasheet for **TP762505**

Cytokeratin 1 (KRT1) (NM_006121) Human Recombinant Protein

Product data:

Product Type:	Recombinant Proteins
Description:	Purified recombinant protein of Human keratin 1 (KRT1), 168Glu-513Ser, with N-terminal His tag, expressed in E.coli, 50ug
Species:	Human
Expression Host:	E. coli
Expression cDNA Clone or AA Sequence:	A DNA sequence encoding the region (168Glu-513Ser) of KRT1
Tag:	N-His
Predicted MW:	42.4kDa
Concentration:	>0.05 µg/µL as determined by microplate BCA method
Purity:	> 80% as determined by SDS-PAGE and Coomassie blue staining
Buffer:	25 mM Tris-HCl, pH 8.0, 150 mM NaCl, 1% sarkosyl, 10% glycerol
Note:	For testing in cell culture applications, please filter before use. Note that you may experience some loss of protein during the filtration process.
Storage:	Store at -80°C after receiving vials.
Stability:	Stable for 12 months from the date of receipt of the product under proper storage and handling conditions. Avoid repeated freeze-thaw cycles.
RefSeq:	NP_006112
Locus ID:	3848
UniProt ID:	P04264
RefSeq Size:	2507
Cytogenetics:	12q13.13
RefSeq ORF:	1932
Synonyms:	CK1; EHK; EHK1; EPPK; K1; KRT1A; NEPPK



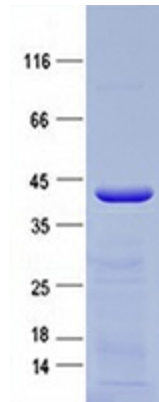
[View online »](#)

Summary:

The protein encoded by this gene is a member of the keratin gene family. The type II cytokeratins consist of basic or neutral proteins which are arranged in pairs of heterotypic keratin chains coexpressed during differentiation of simple and stratified epithelial tissues. This type II cytokeratin is specifically expressed in the spinous and granular layers of the epidermis with family member KRT10 and mutations in these genes have been associated with bullous congenital ichthyosiform erythroderma. The type II cytokeratins are clustered in a region of chromosome 12q12-q13. [provided by RefSeq, Jul 2008]

Protein Families:

Druggable Genome

Product images:

Purified recombinant protein KRT1 was analyzed by SDS-PAGE gel and Coomassie Blue Staining.