

Product datasheet for **TP762501**

CD37 (NM_001774) Human Recombinant Protein

Product data:

Product Type:	Recombinant Proteins
Description:	Purified recombinant protein of Human CD37 molecule (CD37), transcript variant 1, 112Arg-241Asn, with N-terminal His tag, expressed in E.coli, 50ug
Species:	Human
Expression Host:	E. coli
Expression cDNA Clone or AA Sequence:	A DNA sequence encoding the region (112Arg-241Asn) of CD37
Tag:	N-His
Predicted MW:	17.2kDa
Concentration:	>0.05 µg/µL as determined by microplate BCA method
Purity:	> 80% as determined by SDS-PAGE and Coomassie blue staining
Buffer:	25 mM Tris-HCl, pH 8.0, 150 mM NaCl, 1% sarkosyl, 10% glycerol
Note:	For testing in cell culture applications, please filter before use. Note that you may experience some loss of protein during the filtration process.
Storage:	Store at -80°C after receiving vials.
Stability:	Stable for 12 months from the date of receipt of the product under proper storage and handling conditions. Avoid repeated freeze-thaw cycles.
RefSeq:	NP_001765
Locus ID:	951
UniProt ID:	P11049
RefSeq Size:	1263
Cytogenetics:	19q13.33
RefSeq ORF:	843
Synonyms:	GP52-40; TSPAN26



[View online »](#)

Summary:

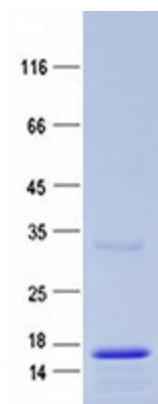
The protein encoded by this gene is a member of the transmembrane 4 superfamily, also known as the tetraspanin family. Most of these members are cell-surface proteins that are characterized by the presence of four hydrophobic domains. The proteins mediate signal transduction events that play a role in the regulation of cell development, activation, growth and motility. This encoded protein is a cell surface glycoprotein that is known to complex with integrins and other transmembrane 4 superfamily proteins. It may play a role in T-cell-B-cell interactions. Alternate splicing results in multiple transcript variants encoding different isoforms. [provided by RefSeq, Jul 2008]

Protein Families:

Transmembrane

Protein Pathways:

Hematopoietic cell lineage

Product images:

Purified recombinant protein CD37 was analyzed by SDS-PAGE gel and Coomossie Blue Staining.