

Product datasheet for **TP762494**

Non Neuronal Enolase (ENO1) (NM_001428) Human Recombinant Protein

Product data:

Product Type:	Recombinant Proteins
Description:	Purified recombinant protein of Human enolase 1, (alpha) (ENO1), transcript variant 1, 1Met-421Ala, with N-terminal His tag, expressed in E.coli, 50ug
Species:	Human
Expression Host:	E. coli
Expression cDNA Clone or AA Sequence:	A DNA sequence encoding the region (1Met-421Ala) of ENO1
Tag:	N-His
Predicted MW:	48.0kDa
Concentration:	>0.05 µg/µL as determined by microplate BCA method
Purity:	> 80% as determined by SDS-PAGE and Coomassie blue staining
Buffer:	25 mM Tris-HCl, pH 8.0, 150 mM NaCl, 10% glycerol
Note:	For testing in cell culture applications, please filter before use. Note that you may experience some loss of protein during the filtration process.
Storage:	Store at -80°C after receiving vials.
Stability:	Stable for 12 months from the date of receipt of the product under proper storage and handling conditions. Avoid repeated freeze-thaw cycles.
RefSeq:	NP_001419
Locus ID:	2023
UniProt ID:	P06733 , A0A024R4F1
RefSeq Size:	2204
Cytogenetics:	1p36.23
RefSeq ORF:	1302
Synonyms:	ENO1L1; HEL-S-17; MPB1; NNE; PPH



[View online »](#)

Summary:

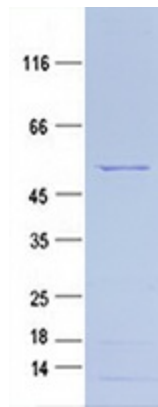
This gene encodes alpha-enolase, one of three enolase isoenzymes found in mammals. Each isoenzyme is a homodimer composed of 2 alpha, 2 gamma, or 2 beta subunits, and functions as a glycolytic enzyme. Alpha-enolase in addition, functions as a structural lens protein (taucristallin) in the monomeric form. Alternative splicing of this gene results in a shorter isoform that has been shown to bind to the c-myc promoter and function as a tumor suppressor. Several pseudogenes have been identified, including one on the long arm of chromosome 1. Alpha-enolase has also been identified as an autoantigen in Hashimoto encephalopathy. [provided by RefSeq, Jan 2011]

Protein Families:

Druggable Genome, Transcription Factors

Protein Pathways:

Glycolysis / Gluconeogenesis, Metabolic pathways, RNA degradation

Product images:

Purified recombinant protein ENO1 was analyzed by SDS-PAGE gel and Coomassie Blue Staining.