

## Product datasheet for **TP762458**

### **RSPO1 (NM\_001038633) Human Recombinant Protein**

#### **Product data:**

<b>Product Type:</b>	Recombinant Proteins
<b>Description:</b>	Purified recombinant protein of Human R-spondin homolog ( <i>Xenopus laevis</i> ) (RSPO1), Ser21-End, with N-terminal His tag, expressed in E.coli, 50ug
<b>Species:</b>	Human
<b>Expression Host:</b>	E. coli
<b>Expression cDNA Clone or AA Sequence:</b>	A DNA sequence encoding the region(Ser21-End) of RSPO1
<b>Tag:</b>	N-His
<b>Predicted MW:</b>	26.8 kDa
<b>Concentration:</b>	>0.05 µg/µL as determined by microplate BCA method
<b>Purity:</b>	> 80% as determined by SDS-PAGE and Coomassie blue staining
<b>Buffer:</b>	50 mM Tris-HCl, pH 8.0, 8 M urea
<b>Note:</b>	For testing in cell culture applications, please filter before use. Note that you may experience some loss of protein during the filtration process.
<b>Storage:</b>	Store at -80°C after receiving vials.
<b>Stability:</b>	Stable for 12 months from the date of receipt of the product under proper storage and handling conditions. Avoid repeated freeze-thaw cycles.
<b>RefSeq:</b>	<a href="#">NP_001033722</a>
<b>Locus ID:</b>	284654
<b>UniProt ID:</b>	<a href="#">Q2MKA7</a>
<b>RefSeq Size:</b>	2995
<b>Cytogenetics:</b>	1p34.3
<b>RefSeq ORF:</b>	789
<b>Synonyms:</b>	CRISTIN3; RSPO



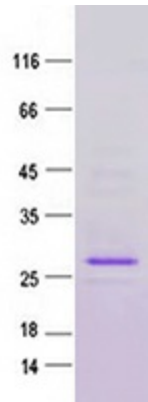
[View online »](#)

**Summary:**

This gene encodes a secreted activator protein with two cysteine-rich, furin-like domains and one thrombospondin type 1 domain. The encoded protein is a ligand for leucine-rich repeat-containing G-protein coupled receptors (LGR proteins) and positively regulates the Wnt signaling pathway. In mice, the protein induces the rapid onset of crypt cell proliferation and increases intestinal epithelial healing, providing a protective effect against chemotherapy-induced adverse effects. Alternative splicing results in multiple transcript variants. [provided by RefSeq, Apr 2014]

**Protein Families:**

Secreted Protein

**Product images:**

Purified recombinant protein RSPO1 was analyzed by SDS-PAGE gel and Coomassie Blue Staining.