

Product datasheet for **TP762455**

NFH (NEFH) (NM_021076) Human Recombinant Protein

Product data:

Product Type:	Recombinant Proteins
Description:	Purified recombinant protein of Human neurofilament, heavy polypeptide (NEFH), Ala778-End, with N-terminal His tag, expressed in E.coli, 50ug
Species:	Human
Expression Host:	E. coli
Expression cDNA Clone or AA Sequence:	A DNA sequence encoding the region(Ala778-End) of NEFH
Tag:	N-His
Predicted MW:	27.1 kDa
Concentration:	>0.05 µg/µL as determined by microplate BCA method
Purity:	> 80% as determined by SDS-PAGE and Coomassie blue staining
Buffer:	50 mM Tris-HCl, pH 8.0, 8 M urea
Note:	For testing in cell culture applications, please filter before use. Note that you may experience some loss of protein during the filtration process.
Storage:	Store at -80°C after receiving vials.
Stability:	Stable for 12 months from the date of receipt of the product under proper storage and handling conditions. Avoid repeated freeze-thaw cycles.
RefSeq:	NP_066554
Locus ID:	4744
UniProt ID:	P12036
RefSeq Size:	3695
Cytogenetics:	22q12.2
RefSeq ORF:	3060
Synonyms:	CMT2CC; NFH



[View online »](#)

Summary:

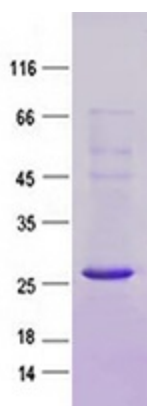
Neurofilaments are type IV intermediate filament heteropolymers composed of light, medium, and heavy chains. Neurofilaments comprise the axoskeleton and functionally maintain neuronal caliber. They may also play a role in intracellular transport to axons and dendrites. This gene encodes the heavy neurofilament protein. This protein is commonly used as a biomarker of neuronal damage and susceptibility to amyotrophic lateral sclerosis (ALS) has been associated with mutations in this gene. [provided by RefSeq, Oct 2008]

Protein Families:

Druggable Genome

Protein Pathways:

Amyotrophic lateral sclerosis (ALS)

Product images:

Purified recombinant protein NEFH was analyzed by SDS-PAGE gel and Coomassie Blue Staining.