

## Product datasheet for **TP762427**

### **PINK1 (NM\_032409) Human Recombinant Protein**

#### **Product data:**

<b>Product Type:</b>	Recombinant Proteins
<b>Description:</b>	Purified recombinant protein of Human PTEN induced putative kinase 1 (PINK1), nuclear gene encoding mitochondrial protein, Gly349-Pro472, with N-terminal His-ABP tag, expressed in E.coli, 50ug
<b>Species:</b>	Human
<b>Expression Host:</b>	E. coli
<b>Expression cDNA Clone or AA Sequence:</b>	A DNA sequence encoding the region (Gly349-Pro472) of PINK1
<b>Tag:</b>	N-His-ABP (Albumin-Binding Protein)
<b>Predicted MW:</b>	28.8 kDa
<b>Concentration:</b>	>0.05 µg/µL as determined by microplate BCA method
<b>Purity:</b>	>80% as determined by SDS-PAGE and Coomassie blue staining
<b>Buffer:</b>	25 mM Tris-HCl, pH 8.0, 150 mM NaCl, 10% glycerol
<b>Note:</b>	For testing in cell culture applications, please filter before use. Note that you may experience some loss of protein during the filtration process.
<b>Storage:</b>	Store at -80°C after receiving vials.
<b>Stability:</b>	Stable for 12 months from the date of receipt of the product under proper storage and handling conditions. Avoid repeated freeze-thaw cycles.
<b>RefSeq:</b>	<a href="#">NP_115785</a>
<b>Locus ID:</b>	65018
<b>UniProt ID:</b>	<a href="#">Q9BXM7</a>
<b>RefSeq Size:</b>	2680
<b>Cytogenetics:</b>	1p36.12
<b>RefSeq ORF:</b>	1743
<b>Synonyms:</b>	BRPK; PARK6



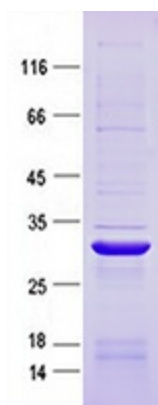
[View online »](#)

**Summary:** This gene encodes a serine/threonine protein kinase that localizes to mitochondria. It is thought to protect cells from stress-induced mitochondrial dysfunction. Mutations in this gene cause one form of autosomal recessive early-onset Parkinson disease. [provided by RefSeq, Jul 2008]

**Protein Families:** Druggable Genome, Protein Kinase

**Protein Pathways:** Parkinson's disease

**Product images:**



Purified recombinant protein PINK1 was analyzed by SDS-PAGE gel and Coomassie Blue Staining.