

Product datasheet for **TP762426**

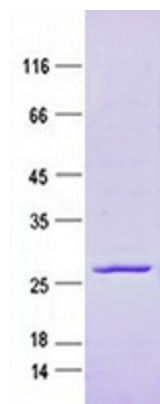
LY6E (NM_002346) Human Recombinant Protein

Product data:

Product Type:	Recombinant Proteins
Description:	Purified recombinant protein of Human lymphocyte antigen 6 complex, locus E (LY6E), transcript variant 1, Cys23-Ser101, with N-terminal His-ABP tag, expressed in E.coli, 50ug
Species:	Human
Expression Host:	E. coli
Expression cDNA Clone or AA Sequence:	A DNA sequence encoding the region (Cys23-Ser101) of LY6E
Tag:	N-His-ABP (Albumin-Binding Protein)
Predicted MW:	23.6 kDa
Concentration:	>0.05 µg/µL as determined by microplate BCA method
Purity:	>80% as determined by SDS-PAGE and Coomassie blue staining
Buffer:	25 mM Tris-HCl, pH 8.0, 150 mM NaCl, 10% glycerol
Note:	For testing in cell culture applications, please filter before use. Note that you may experience some loss of protein during the filtration process.
Storage:	Store at -80°C after receiving vials.
Stability:	Stable for 12 months from the date of receipt of the product under proper storage and handling conditions. Avoid repeated freeze-thaw cycles.
RefSeq:	NP_002337
Locus ID:	4061
UniProt ID:	Q16553
RefSeq Size:	1194
Cytogenetics:	8q24.3
RefSeq ORF:	393
Synonyms:	RIG-E; RIGE; SCA-2; SCA2; TSA-1
Summary:	Involved in T-cell development. Believed to act as a modulator of nicotinic acetylcholine receptors (nAChRs) activity. In vitro inhibits alpha-3:beta-4-containing nAChRs maximum response.[UniProtKB/Swiss-Prot Function]



[View online »](#)

Product images:

Purified recombinant protein LY6E was analyzed by SDS-PAGE gel and Coomassie Blue Staining.