

Product datasheet for **TP762421**

Cyclin D1 (CCND1) (NM_053056) Human Recombinant Protein

Product data:

| | |
|---------------------------------------|--|
| Product Type: | Recombinant Proteins |
| Description: | Purified recombinant protein of Human cyclin D1 (CCND1), Asn216-Leu229(8 repeat regions linked with GGGGS), with N-terminal His tag, expressed in E.coli, 50ug |
| Species: | Human |
| Expression Host: | E. coli |
| Expression cDNA Clone or AA Sequence: | A DNA sequence encoding the region (Asn216-Leu229(8 repeat regions linked with GGGGS)) of CCND1 |
| Tag: | N-His |
| Predicted MW: | 16.1 kDa |
| Concentration: | >0.05 µg/µL as determined by microplate BCA method |
| Purity: | >80% as determined by SDS-PAGE and Coomassie blue staining |
| Buffer: | 50 mM Tris-HCl, pH 8.0, 8 M urea |
| Note: | For testing in cell culture applications, please filter before use. Note that you may experience some loss of protein during the filtration process. |
| Storage: | Store at -80°C after receiving vials. |
| Stability: | Stable for 12 months from the date of receipt of the product under proper storage and handling conditions. Avoid repeated freeze-thaw cycles. |
| RefSeq: | NP_444284 |
| Locus ID: | 595 |
| UniProt ID: | P24385 , Q6FI00 |
| RefSeq Size: | 4304 |
| Cytogenetics: | 11q13.3 |
| RefSeq ORF: | 885 |
| Synonyms: | BCL1; D11S287E; PRAD1; U21B31 |



[View online »](#)

Summary:

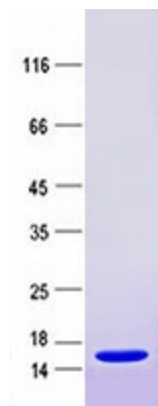
The protein encoded by this gene belongs to the highly conserved cyclin family, whose members are characterized by a dramatic periodicity in protein abundance throughout the cell cycle. Cyclins function as regulators of CDK kinases. Different cyclins exhibit distinct expression and degradation patterns which contribute to the temporal coordination of each mitotic event. This cyclin forms a complex with and functions as a regulatory subunit of CDK4 or CDK6, whose activity is required for cell cycle G1/S transition. This protein has been shown to interact with tumor suppressor protein Rb and the expression of this gene is regulated positively by Rb. Mutations, amplification and overexpression of this gene, which alters cell cycle progression, are observed frequently in a variety of human cancers. [provided by RefSeq, Dec 2019]

Protein Families:

Druggable Genome, Stem cell - Pluripotency, Stem cell relevant signaling - DSL/Notch pathway, Stem cell relevant signaling - JAK/STAT signaling pathway, Stem cell relevant signaling - Wnt Signaling pathway

Protein Pathways:

Acute myeloid leukemia, Bladder cancer, Cell cycle, Chronic myeloid leukemia, Colorectal cancer, Endometrial cancer, Focal adhesion, Glioma, Jak-STAT signaling pathway, Melanoma, Non-small cell lung cancer, p53 signaling pathway, Pancreatic cancer, Pathways in cancer, Prostate cancer, Small cell lung cancer, Thyroid cancer, Viral myocarditis, Wnt signaling pathway

Product images:

Purified recombinant protein CCND1 was analyzed by SDS-PAGE gel and Coomassie Blue Staining.