

Product datasheet for **TP762416**

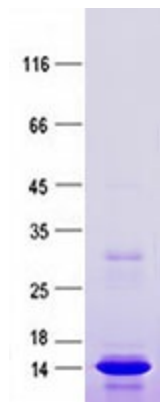
GCDFP 15 (PIP) (NM_002652) Human Recombinant Protein

Product data:

Product Type:	Recombinant Proteins
Description:	Purified recombinant protein of Human prolactin-induced protein (PIP), Gln29-End, with N-terminal His tag, expressed in E.coli, 50ug
Species:	Human
Expression Host:	E. coli
Expression cDNA Clone or AA Sequence:	A DNA sequence encoding the region (Gln29-End) of GCDFP-15
Tag:	N-His
Predicted MW:	13.5 kDa
Concentration:	>0.05 µg/µL as determined by microplate BCA method
Purity:	>80% as determined by SDS-PAGE and Coomassie blue staining
Buffer:	50 mM Tris-HCl, pH 8.0, 8 M urea
Note:	For testing in cell culture applications, please filter before use. Note that you may experience some loss of protein during the filtration process.
Storage:	Store at -80°C after receiving vials.
Stability:	Stable for 12 months from the date of receipt of the product under proper storage and handling conditions. Avoid repeated freeze-thaw cycles.
RefSeq:	NP_002643
Locus ID:	5304
UniProt ID:	P12273
RefSeq Size:	591
Cytogenetics:	7q34
RefSeq ORF:	438
Synonyms:	GCDFP-15; GCDFP15; GPIP4
Protein Families:	Secreted Protein



[View online »](#)

Product images:

Purified recombinant protein GCDFP-15 was analyzed by SDS-PAGE gel and Coomassie Blue Staining.