

## Product datasheet for **TP762402**

### MYBPC3 (NM\_000256) Human Recombinant Protein

#### Product data:

Product Type:	Recombinant Proteins
Description:	Purified recombinant protein of Human myosin binding protein C, cardiac (MYBPC3), Asp151-Glu258, with N-terminal His tag, expressed in E.coli, 50ug
Species:	Human
Expression Host:	E. coli
Expression cDNA Clone or AA Sequence:	A DNA sequence encoding the region(Asp151-Glu258) of MYBPC3
Tag:	N-His
Predicted MW:	12.0 kDa
Concentration:	>0.05 µg/µL as determined by microplate BCA method
Purity:	> 80% as determined by SDS-PAGE and Coomassie blue staining
Buffer:	50 mM Tris-HCl, pH 8.0, 8 M urea
Note:	For testing in cell culture applications, please filter before use. Note that you may experience some loss of protein during the filtration process.
Storage:	Store at -80°C after receiving vials.
Stability:	Stable for 12 months from the date of receipt of the product under proper storage and handling conditions. Avoid repeated freeze-thaw cycles.
RefSeq:	<a href="#">NP_000247</a>
Locus ID:	4607
UniProt ID:	<a href="#">Q14896</a> , <a href="#">A5YM48</a>
RefSeq Size:	4200
Cytogenetics:	11p11.2
RefSeq ORF:	3822
Synonyms:	CMD1MM; CMH4; cMyBP-C; FHC; LVNC10; MYBP-C



[View online »](#)

**Summary:**

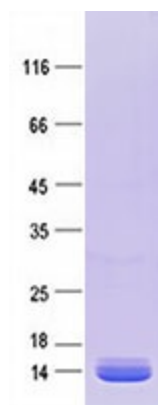
MYBPC3 encodes the cardiac isoform of myosin-binding protein C. Myosin-binding protein C is a myosin-associated protein found in the cross-bridge-bearing zone (C region) of A bands in striated muscle. MYBPC3, the cardiac isoform, is expressed exclusively in heart muscle. Regulatory phosphorylation of the cardiac isoform in vivo by cAMP-dependent protein kinase (PKA) upon adrenergic stimulation may be linked to modulation of cardiac contraction. Mutations in MYBPC3 are one cause of familial hypertrophic cardiomyopathy. [provided by RefSeq, Jul 2008]

**Protein Families:**

Druggable Genome

**Protein Pathways:**

Dilated cardiomyopathy, Hypertrophic cardiomyopathy (HCM)

**Product images:**

Purified recombinant protein MYBPC3 was analyzed by SDS-PAGE gel and Coomassie Blue Staining.