

Product datasheet for **TP762386**

SMAD3 (NM_005902) Human Recombinant Protein

Product data:

| | |
|---------------------------------------|---|
| Product Type: | Recombinant Proteins |
| Description: | Purified recombinant protein of Human SMAD family member 3 (SMAD3), transcript variant 1, Ser2-Ala230, with N-terminal His tag, expressed in E.coli, 50ug |
| Species: | Human |
| Expression Host: | E. coli |
| Expression cDNA Clone or AA Sequence: | A DNA sequence encoding the region (Ser2-Ala230) of SMAD3 |
| Tag: | N-His |
| Predicted MW: | 26.0 kDa |
| Concentration: | >0.05 µg/µL as determined by microplate BCA method |
| Purity: | >80% as determined by SDS-PAGE and Coomassie blue staining |
| Buffer: | 50 mM Tris-HCl, pH 8.0, 8 M urea |
| Note: | For testing in cell culture applications, please filter before use. Note that you may experience some loss of protein during the filtration process. |
| Storage: | Store at -80°C after receiving vials. |
| Stability: | Stable for 12 months from the date of receipt of the product under proper storage and handling conditions. Avoid repeated freeze-thaw cycles. |
| RefSeq: | NP_005893 |
| Locus ID: | 4088 |
| UniProt ID: | P84022 , A0A024R5Z3 , Q9P0T0 |
| RefSeq Size: | 6256 |
| Cytogenetics: | 15q22.33 |
| RefSeq ORF: | 1275 |
| Synonyms: | HSPC193; HsT17436; JV15-2; LDS1C; LDS3; MADH3 |



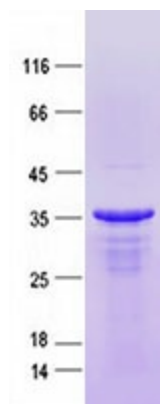
[View online »](#)

Summary: The SMAD family of proteins are a group of intracellular signal transducer proteins similar to the gene products of the *Drosophila* gene 'mothers against decapentaplegic' (Mad) and the *C. elegans* gene Sma. The SMAD3 protein functions in the transforming growth factor-beta signaling pathway, and transmits signals from the cell surface to the nucleus, regulating gene activity and cell proliferation. It also functions as a tumor suppressor. Mutations in this gene are associated with aneurysms-osteoarthritis syndrome and Loeys-Dietz Syndrome 3. [provided by RefSeq, Nov 2019]

Protein Families: Cancer stem cells, Druggable Genome, Embryonic stem cells, ES Cell Differentiation/IPS, Stem cell relevant signaling - JAK/STAT signaling pathway, Stem cell relevant signaling - TGFb/BMP signaling pathway, Transcription Factors

Protein Pathways: Adherens junction, Cell cycle, Chronic myeloid leukemia, Colorectal cancer, Pancreatic cancer, Pathways in cancer, TGF-beta signaling pathway, Wnt signaling pathway

Product images:



Purified recombinant protein SMAD3 was analyzed by SDS-PAGE gel and Coomassie Blue Staining.