

Product datasheet for **TP762375**

CSNK1G1 (NM_022048) Human Recombinant Protein

Product data:

Product Type:	Recombinant Proteins
Description:	Purified recombinant protein of Human casein kinase 1, gamma 1 (CSNK1G1), Arg163-End, with N-terminal His tag, expressed in E.coli, 50ug
Species:	Human
Expression Host:	E. coli
Expression cDNA Clone or AA Sequence:	A DNA sequence encoding the region (Arg163-End) of CSNK1G1
Tag:	N-His
Predicted MW:	30.2 kDa
Concentration:	>0.05 µg/µL as determined by microplate BCA method
Purity:	>80% as determined by SDS-PAGE and Coomassie blue staining
Buffer:	50 mM Tris-HCl, pH 8.0, 8 M urea
Note:	For testing in cell culture applications, please filter before use. Note that you may experience some loss of protein during the filtration process.
Storage:	Store at -80°C after receiving vials.
Stability:	Stable for 12 months from the date of receipt of the product under proper storage and handling conditions. Avoid repeated freeze-thaw cycles.
RefSeq:	NP_071331
Locus ID:	53944
UniProt ID:	Q9HCP0 , A0A024R5W3
RefSeq Size:	8163
Cytogenetics:	15q22.31
RefSeq ORF:	1266
Synonyms:	CK1gamma1



[View online »](#)

Summary:

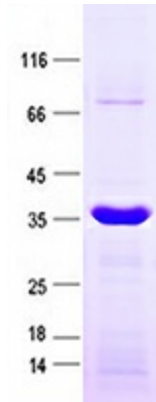
This gene encodes a member of the casein kinase I gene family. This family is comprised of serine/threonine kinases that phosphorylate acidic proteins such as caseins. The encoded kinase plays a role in cell cycle checkpoint arrest in response to stalled replication forks by phosphorylating Claspin. A mutation in this gene may be associated with non-syndromic early-onset epilepsy (NSEOE). [provided by RefSeq, Jul 2016]

Protein Families:

Druggable Genome, Protein Kinase

Protein Pathways:

Hedgehog signaling pathway

Product images:

Purified recombinant protein CSNK1G1 was analyzed by SDS-PAGE gel and Coomassie Blue Staining.