

## Product datasheet for **TP762373**

### IRE1 (ERN2) (NM\_033266) Human Recombinant Protein

#### Product data:

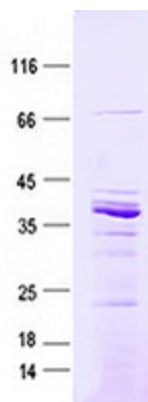
Product Type:	Recombinant Proteins
Description:	Purified recombinant protein of Human endoplasmic reticulum to nucleus signaling 2 (ERN2), Asp320-Asp617, with N-terminal His tag, expressed in E.coli, 50ug
Species:	Human
Expression Host:	E. coli
Expression cDNA Clone or AA Sequence:	A DNA sequence encoding the region (Asp320-Asp617) of ERN2
Tag:	N-His
Predicted MW:	32.5 kDa
Concentration:	>0.05 µg/µL as determined by microplate BCA method
Purity:	>80% as determined by SDS-PAGE and Coomassie blue staining
Buffer:	50 mM Tris-HCl, pH 8.0, 8 M urea
Note:	For testing in cell culture applications, please filter before use. Note that you may experience some loss of protein during the filtration process.
Storage:	Store at -80°C after receiving vials.
Stability:	Stable for 12 months from the date of receipt of the product under proper storage and handling conditions. Avoid repeated freeze-thaw cycles.
RefSeq:	<a href="#">NP_150296</a>
Locus ID:	10595
UniProt ID:	<a href="#">Q76MJ5</a> , <a href="#">A5YM46</a> , <a href="#">A5YM65</a>
RefSeq Size:	3549
Cytogenetics:	16p12.2
RefSeq ORF:	2922
Synonyms:	hIRE2p; IRE1-BETA; IRE1b; IRE2p
Summary:	Induces translational repression through 28S ribosomal RNA cleavage in response to ER stress. Pro-apoptotic. Appears to play no role in the unfolded-protein response, unlike closely related proteins.[UniProtKB/Swiss-Prot Function]



[View online »](#)

Protein Families: Druggable Genome, Protein Kinase

### Product images:



Purified recombinant protein ERN2 was analyzed by SDS-PAGE gel and Coomassie Blue Staining.