

Product datasheet for **TP762369**

GPA33 (NM_005814) Human Recombinant Protein

Product data:

| | |
|--|---|
| Product Type: | Recombinant Proteins |
| Description: | Purified recombinant protein of Human glycoprotein A33 (transmembrane) (GPA33), Ile22-Val235-GGGGS-Tyr257-End, with N-terminal His tag, expressed in E.coli, 50ug |
| Species: | Human |
| Expression Host: | E. coli |
| Expression cDNA Clone or AA Sequence: | A DNA sequence encoding the region(Ile22-Val235-GGGGS-Tyr257-End) of GPA33 |
| Tag: | N-His |
| Predicted MW: | 31.6 kDa |
| Concentration: | >0.05 µg/µL as determined by microplate BCA method |
| Purity: | > 80% as determined by SDS-PAGE and Coomassie blue staining |
| Buffer: | 50 mM Tris-HCl, pH 8.0, 8 M urea |
| Note: | For testing in cell culture applications, please filter before use. Note that you may experience some loss of protein during the filtration process. |
| Storage: | Store at -80°C after receiving vials. |
| Stability: | Stable for 12 months from the date of receipt of the product under proper storage and handling conditions. Avoid repeated freeze-thaw cycles. |
| RefSeq: | NP_005805 |
| Locus ID: | 10223 |
| UniProt ID: | Q99795 |
| RefSeq Size: | 2793 |
| Cytogenetics: | 1q24.1 |
| RefSeq ORF: | 957 |
| Synonyms: | A33 |



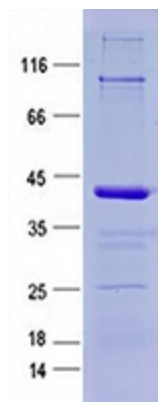
[View online »](#)

Summary:

The glycoprotein encoded by this gene is a cell surface antigen that is expressed in greater than 95% of human colon cancers. The open reading frame encodes a 319-amino acid polypeptide having a putative secretory signal sequence and 3 potential glycosylation sites. The predicted mature protein has a 213-amino acid extracellular region, a single transmembrane domain, and a 62-amino acid intracellular tail. The sequence of the extracellular region contains 2 domains characteristic of the CD2 subgroup of the immunoglobulin (Ig) superfamily. [provided by RefSeq, Jul 2008]

Protein Families:

Druggable Genome, Transmembrane

Product images:

Purified recombinant protein GPA33 was analyzed by SDS-PAGE gel and Coomassie Blue Staining.