

Product datasheet for **TP762360**

PGP9.5 (UCHL1) (NM_004181) Human Recombinant Protein

Product data:

Product Type:	Recombinant Proteins
Description:	Purified recombinant protein of Human ubiquitin carboxyl-terminal esterase L1 (ubiquitin thiolesterase) (UCHL1), Met1-Cys220, with N-terminal His tag, expressed in E.coli, 50ug
Species:	Human
Expression Host:	E. coli
Expression cDNA Clone or AA Sequence:	A DNA sequence encoding the region(Met1-Cys220) of UCHL1
Tag:	N-His
Predicted MW:	24.5 kDa
Concentration:	>0.05 µg/µL as determined by microplate BCA method
Purity:	> 80% as determined by SDS-PAGE and Coomassie blue staining
Buffer:	25 mM Tris-HCl, pH 8.0, 150 mM NaCl, 10% glycerol
Note:	For testing in cell culture applications, please filter before use. Note that you may experience some loss of protein during the filtration process.
Storage:	Store at -80°C after receiving vials.
Stability:	Stable for 12 months from the date of receipt of the product under proper storage and handling conditions. Avoid repeated freeze-thaw cycles.
RefSeq:	NP_004172
Locus ID:	7345
UniProt ID:	P09936
RefSeq Size:	1141
Cytogenetics:	4p13
RefSeq ORF:	669
Synonyms:	HEL-117; HEL-S-53; NDGOA; PARK5; PGP 9.5; PGP9.5; PGP95; SPG79; Uch-L1



[View online »](#)

Summary:

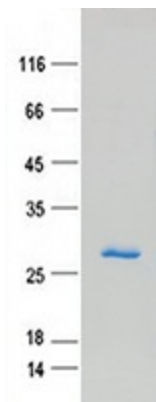
The protein encoded by this gene belongs to the peptidase C12 family. This enzyme is a thiol protease that hydrolyzes a peptide bond at the C-terminal glycine of ubiquitin. This gene is specifically expressed in the neurons and in cells of the diffuse neuroendocrine system. Mutations in this gene may be associated with Parkinson disease.[provided by RefSeq, Sep 2009]

Protein Families:

Druggable Genome, Protease

Protein Pathways:

Parkinson's disease

Product images:

Purified recombinant protein UCHL1 was analyzed by SDS-PAGE gel and Coomassie Blue Staining.