

Product datasheet for **TP762350**

Mesothelin (MSLN) (NM_013404) Human Recombinant Protein

Product data:

Product Type:	Recombinant Proteins
Description:	Purified recombinant protein of Human mesothelin (MSLN), transcript variant 2, Asn402-Thr581, with N-terminal His tag, expressed in E.coli, 50ug
Species:	Human
Expression Host:	E. coli
Expression cDNA Clone or AA Sequence:	A DNA sequence encoding the region(Asn402-Thr581) of MSLN
Tag:	N-His
Predicted MW:	20.3 kDa
Concentration:	>0.05 µg/µL as determined by microplate BCA method
Purity:	> 80% as determined by SDS-PAGE and Coomassie blue staining
Buffer:	25 mM Tris-HCl, pH 8.0, 150 mM NaCl, 10% glycerol
Note:	For testing in cell culture applications, please filter before use. Note that you may experience some loss of protein during the filtration process.
Storage:	Store at -80°C after receiving vials.
Stability:	Stable for 12 months from the date of receipt of the product under proper storage and handling conditions. Avoid repeated freeze-thaw cycles.
RefSeq:	NP_037536
Locus ID:	10232
UniProt ID:	Q13421
RefSeq Size:	2076
Cytogenetics:	16p13.3
RefSeq ORF:	1890
Synonyms:	MPF; SMRP



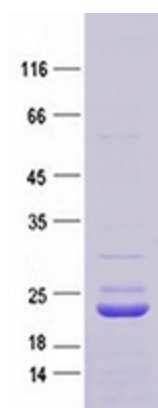
[View online »](#)

Summary:

This gene encodes a preproprotein that is proteolytically processed to generate two protein products, megakaryocyte potentiating factor and mesothelin. Megakaryocyte potentiating factor functions as a cytokine that can stimulate colony formation of bone marrow megakaryocytes. Mesothelin is a glycosylphosphatidylinositol-anchored cell-surface protein that may function as a cell adhesion protein. This protein is overexpressed in epithelial mesotheliomas, ovarian cancers and in specific squamous cell carcinomas. Alternative splicing results in multiple transcript variants, at least one of which encodes an isoform that is proteolytically processed. [provided by RefSeq, Feb 2016]

Protein Families:

Druggable Genome, Secreted Protein, Transmembrane

Product images:

Purified recombinant protein MSLN was analyzed by SDS-PAGE gel and Coomossie Blue Staining.