

Product datasheet for **TP762339**

DISP2 (NM_033510) Human Recombinant Protein

Product data:

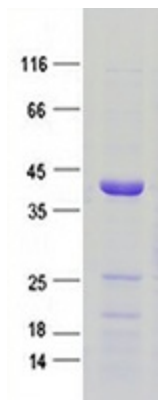
Product Type:	Recombinant Proteins
Description:	Purified recombinant protein of Human dispatched homolog 2 (Drosophila) (DISP2), Gln1108-End, with N-terminal His tag, expressed in E.coli, 50ug
Species:	Human
Expression Host:	E. coli
Expression cDNA Clone or AA Sequence:	A DNA sequence encoding the region(Gln1108-End) of DISP2
Tag:	N-His
Predicted MW:	31.1 kDa
Concentration:	>0.05 µg/µL as determined by microplate BCA method
Purity:	> 80% as determined by SDS-PAGE and Coomassie blue staining
Buffer:	50 mM Tris-HCl, pH 8.0, 8 M urea
Note:	For testing in cell culture applications, please filter before use. Note that you may experience some loss of protein during the filtration process.
Storage:	Store at -80°C after receiving vials.
Stability:	Stable for 12 months from the date of receipt of the product under proper storage and handling conditions. Avoid repeated freeze-thaw cycles.
RefSeq:	NP_277045
Locus ID:	85455
UniProt ID:	A7MBM2
RefSeq Size:	5032
Cytogenetics:	15q15.1
RefSeq ORF:	4203
Synonyms:	C15orf36; DISPB; HsT16908; LINC00594
Summary:	This gene is one of two human homologs of a segment-polarity gene known as dispatched identified in Drosophila. The product of this gene may be required for normal Hedgehog (Hh) signaling during embryonic pattern formation. [provided by RefSeq, Jan 2017]



[View online »](#)

Protein Families: Transmembrane

Product images:



Purified recombinant protein DISP2 was analyzed by SDS-PAGE gel and Coomassie Blue Staining.