

Product datasheet for **TP762330**

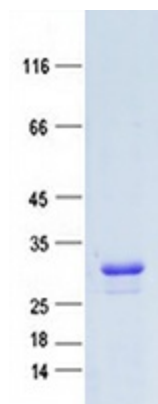
EML2 (NM_012155) Human Recombinant Protein

Product data:

Product Type:	Recombinant Proteins
Description:	Purified recombinant protein of Human echinoderm microtubule associated protein like 2 (EML2), transcript variant 2, Met1-Cys257, with N-terminal His tag, expressed in E.coli, 50ug
Species:	Human
Expression Host:	E. coli
Expression cDNA Clone or AA Sequence:	A DNA sequence encoding the region(Met1-Cys257) of EML2
Tag:	N-His
Predicted MW:	28.6 kDa
Concentration:	>0.05 µg/µL as determined by microplate BCA method
Purity:	> 80% as determined by SDS-PAGE and Coomassie blue staining
Buffer:	50 mM Tris-HCl, pH 8.0, 8 M urea
Note:	For testing in cell culture applications, please filter before use. Note that you may experience some loss of protein during the filtration process.
Storage:	Store at -80°C after receiving vials.
Stability:	Stable for 12 months from the date of receipt of the product under proper storage and handling conditions. Avoid repeated freeze-thaw cycles.
RefSeq:	NP_036287
Locus ID:	24139
UniProt ID:	O95834
RefSeq Size:	2275
Cytogenetics:	19q13.32
RefSeq ORF:	1947
Synonyms:	ELP70; EMAP-2; EMAP2
Summary:	Tubulin binding protein that inhibits microtubule nucleation and growth, resulting in shorter microtubules.[UniProtKB/Swiss-Prot Function]
Protein Families:	Transmembrane



[View online »](#)

Product images:

Purified recombinant protein EML2 was analyzed by SDS-PAGE gel and Coomassie Blue Staining.