

## Product datasheet for **TP762325**

### **ROS1 (NM\_002944) Human Recombinant Protein**

#### **Product data:**

<b>Product Type:</b>	Recombinant Proteins
<b>Description:</b>	Purified recombinant protein of Human c-ros oncogene 1, receptor tyrosine kinase (ROS1), Trp1882-Val2125, with N-terminal His tag, expressed in E.coli, 50ug
<b>Species:</b>	Human
<b>Expression Host:</b>	E. coli
<b>Expression cDNA Clone or AA Sequence:</b>	A DNA sequence encoding the region(Trp1882-Val2125) of ROS1
<b>Tag:</b>	N-His
<b>Predicted MW:</b>	27.3 kDa
<b>Concentration:</b>	>0.05 µg/µL as determined by microplate BCA method
<b>Purity:</b>	> 80% as determined by SDS-PAGE and Coomassie blue staining
<b>Buffer:</b>	50 mM Tris-HCl, pH 8.0, 8 M urea
<b>Note:</b>	For testing in cell culture applications, please filter before use. Note that you may experience some loss of protein during the filtration process.
<b>Storage:</b>	Store at -80°C after receiving vials.
<b>Stability:</b>	Stable for 12 months from the date of receipt of the product under proper storage and handling conditions. Avoid repeated freeze-thaw cycles.
<b>RefSeq:</b>	<a href="#">NP_002935</a>
<b>Locus ID:</b>	6098
<b>UniProt ID:</b>	<a href="#">P08922</a>
<b>RefSeq Size:</b>	7368
<b>Cytogenetics:</b>	6q22.1
<b>RefSeq ORF:</b>	7041
<b>Synonyms:</b>	c-ros-1; MCF3; ROS



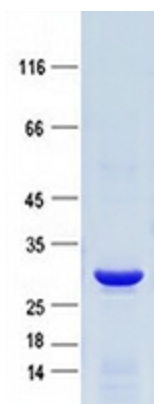
[View online »](#)

**Summary:**

This proto-oncogene, highly-expressed in a variety of tumor cell lines, belongs to the sevenless subfamily of tyrosine kinase insulin receptor genes. The protein encoded by this gene is a type I integral membrane protein with tyrosine kinase activity. The protein may function as a growth or differentiation factor receptor. [provided by RefSeq, Jul 2008]

**Protein Families:**

Druggable Genome, Protein Kinase, Transmembrane

**Product images:**

Purified recombinant protein ROS1 was analyzed by SDS-PAGE gel and Coomossie Blue Staining.