

Product datasheet for **TP762315**

Laminin (LAMA1) (NM_005559) Human Recombinant Protein

Product data:

Product Type:	Recombinant Proteins
Description:	Purified recombinant protein of Human laminin, alpha 1 (LAMA1), Asn2603-His2714, with N-terminal His tag, expressed in E.coli, 50ug
Species:	Human
Expression Host:	E. coli
Expression cDNA Clone or AA Sequence:	A DNA sequence encoding the region(Asn2603-His2714) of LAMA1
Tag:	N-His
Predicted MW:	12.3 kDa
Concentration:	>0.05 µg/µL as determined by microplate BCA method
Purity:	> 80% as determined by SDS-PAGE and Coomassie blue staining
Buffer:	25 mM Tris-HCl, pH 8.0, 150 mM NaCl, 10% glycerol
Note:	For testing in cell culture applications, please filter before use. Note that you may experience some loss of protein during the filtration process.
Storage:	Store at -80°C after receiving vials.
Stability:	Stable for 12 months from the date of receipt of the product under proper storage and handling conditions. Avoid repeated freeze-thaw cycles.
RefSeq:	NP_005550
Locus ID:	284217
UniProt ID:	P25391
RefSeq Size:	9642
Cytogenetics:	18p11.31
RefSeq ORF:	9225
Synonyms:	LAMA; PTBHS; S-LAM-alpha


[View online »](#)

Summary:

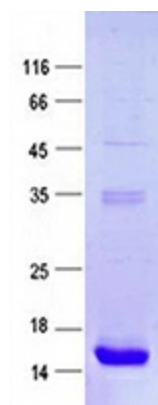
This gene encodes one of the alpha 1 subunits of laminin. The laminins are a family of extracellular matrix glycoproteins that have a heterotrimeric structure consisting of an alpha, beta and gamma chain. These proteins make up a major component of the basement membrane and have been implicated in a wide variety of biological processes including cell adhesion, differentiation, migration, signaling, neurite outgrowth and metastasis. Mutations in this gene may be associated with Poretti-Boltshauser syndrome. [provided by RefSeq, Sep 2014]

Protein Families:

Druggable Genome, ES Cell Differentiation/IPS

Protein Pathways:

ECM-receptor interaction, Focal adhesion, Pathways in cancer, Small cell lung cancer

Product images:


Purified recombinant protein LAMA1 was analyzed by SDS-PAGE gel and Coomassie Blue Staining.