

Product datasheet for **TP762312**

Laminin 5 (LAMB3) (NM_000228) Human Recombinant Protein

Product data:

Product Type:	Recombinant Proteins
Description:	Purified recombinant protein of Human laminin, beta 3 (LAMB3), transcript variant 1, Asp1013-Thr1110, with N-terminal His tag, expressed in E.coli, 50ug
Species:	Human
Expression Host:	E. coli
Expression cDNA Clone or AA Sequence:	A DNA sequence encoding the region(Asp1013-Thr1110) of LAMB3
Tag:	N-His
Predicted MW:	11.0 kDa
Concentration:	>0.05 µg/µL as determined by microplate BCA method
Purity:	> 80% as determined by SDS-PAGE and Coomassie blue staining
Buffer:	25 mM Tris-HCl, pH 8.0, 150 mM NaCl, 10% glycerol
Note:	For testing in cell culture applications, please filter before use. Note that you may experience some loss of protein during the filtration process.
Storage:	Store at -80°C after receiving vials.
Stability:	Stable for 12 months from the date of receipt of the product under proper storage and handling conditions. Avoid repeated freeze-thaw cycles.
RefSeq:	NP_000219
Locus ID:	3914
UniProt ID:	Q13751 , A0A0S2Z3R6
RefSeq Size:	4093
Cytogenetics:	1q32.2
RefSeq ORF:	3516
Synonyms:	A11A; BM600-125KDA; LAM5; LAMNB1



[View online »](#)

Summary:

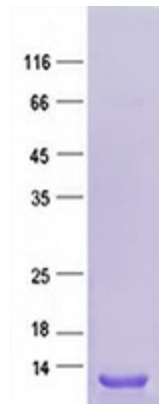
The product encoded by this gene is a laminin that belongs to a family of basement membrane proteins. This protein is a beta subunit laminin, which together with an alpha and a gamma subunit, forms laminin-5. Mutations in this gene cause epidermolysis bullosa junctional Herlitz type, and generalized atrophic benign epidermolysis bullosa, diseases that are characterized by blistering of the skin. Multiple alternatively spliced transcript variants that encode the same protein have been found for this gene. [provided by RefSeq, Jul 2008]

Protein Families:

Druggable Genome, Secreted Protein

Protein Pathways:

ECM-receptor interaction, Focal adhesion, Pathways in cancer, Small cell lung cancer

Product images:

Purified recombinant protein LAMB3 was analyzed by SDS-PAGE gel and Coomassie Blue Staining.