

Product datasheet for **TP762308**

Neurotrophin 3 (NTF3) (NM_001102654) Human Recombinant Protein

Product data:

Product Type:	Recombinant Proteins
Description:	Purified recombinant protein of Human neurotrophin 3 (NTF3), transcript variant 1, Ser139-Thr257, with N-terminal His tag, expressed in E.coli, 50ug
Species:	Human
Expression Host:	E. coli
Expression cDNA Clone or AA Sequence:	A DNA sequence encoding the region(Ser139-Thr257) of NT3
Tag:	N-His
Predicted MW:	13.8 kDa
Concentration:	>0.05 µg/µL as determined by microplate BCA method
Purity:	> 80% as determined by SDS-PAGE and Coomassie blue staining
Buffer:	50 mM Tris-HCl, pH 8.0, 8 M urea
Note:	For testing in cell culture applications, please filter before use. Note that you may experience some loss of protein during the filtration process.
Storage:	Store at -80°C after receiving vials.
Stability:	Stable for 12 months from the date of receipt of the product under proper storage and handling conditions. Avoid repeated freeze-thaw cycles.
RefSeq:	NP_001096124
Locus ID:	4908
UniProt ID:	P20783
RefSeq Size:	1349
Cytogenetics:	12p13.31
RefSeq ORF:	810
Synonyms:	HDNF; NGF-2; NGF2; NT-3; NT3



[View online »](#)

Summary:

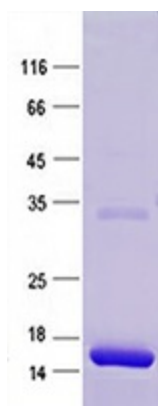
The protein encoded by this gene is a member of the neurotrophin family, that controls survival and differentiation of mammalian neurons. This protein is closely related to both nerve growth factor and brain-derived neurotrophic factor. It may be involved in the maintenance of the adult nervous system, and may affect development of neurons in the embryo when it is expressed in human placenta. NTF3-deficient mice generated by gene targeting display severe movement defects of the limbs. The mature peptide of this protein is identical in all mammals examined including human, pig, rat and mouse. [provided by RefSeq, Jul 2008]

Protein Families:

Druggable Genome, Secreted Protein

Protein Pathways:

MAPK signaling pathway, Neurotrophin signaling pathway

Product images:

Purified recombinant protein NT3 was analyzed by SDS-PAGE gel and Coomassie Blue Staining.