

## Product datasheet for **TP762304**

### **KDM6B (NM\_001080424) Human Recombinant Protein**

#### **Product data:**

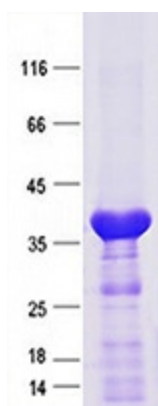
<b>Product Type:</b>	Recombinant Proteins
<b>Description:</b>	Purified recombinant protein of Human lysine (K)-specific demethylase 6B (KDM6B), Gln1061-Leu1350, with N-terminal His tag, expressed in E.coli, 50ug
<b>Species:</b>	Human
<b>Expression Host:</b>	E. coli
<b>Expression cDNA Clone or AA Sequence:</b>	A DNA sequence encoding the region(Gln1061-Leu1350) of KDM6B
<b>Tag:</b>	N-His
<b>Predicted MW:</b>	32.3 kDa
<b>Concentration:</b>	>0.05 µg/µL as determined by microplate BCA method
<b>Purity:</b>	> 80% as determined by SDS-PAGE and Coomassie blue staining
<b>Buffer:</b>	50 mM Tris-HCl, pH 8.0, 8 M urea
<b>Note:</b>	For testing in cell culture applications, please filter before use. Note that you may experience some loss of protein during the filtration process.
<b>Storage:</b>	Store at -80°C after receiving vials.
<b>Stability:</b>	Stable for 12 months from the date of receipt of the product under proper storage and handling conditions. Avoid repeated freeze-thaw cycles.
<b>RefSeq:</b>	<a href="#">NP_001073893</a>
<b>Locus ID:</b>	23135
<b>UniProt ID:</b>	<a href="#">O15054</a>
<b>RefSeq Size:</b>	6704
<b>Cytogenetics:</b>	17p13.1
<b>RefSeq ORF:</b>	5046
<b>Synonyms:</b>	JMJD3; NEDCFSA



[View online »](#)

**Summary:**

The protein encoded by this gene is a lysine-specific demethylase that specifically demethylates di- or tri-methylated lysine 27 of histone H3 (H3K27me2 or H3K27me3). H3K27 trimethylation is a repressive epigenetic mark controlling chromatin organization and gene silencing. This protein can also demethylate non-histone proteins such as retinoblastoma protein. Through its demethylation activity this gene influences cellular differentiation and development, tumorigenesis, inflammatory diseases, and neurodegenerative diseases. This protein has two classical nuclear localization signals at its N-terminus. Alternative splicing results in multiple transcript variants encoding distinct isoforms. [provided by RefSeq, Feb 2017]

**Product images:**

Purified recombinant protein KDM6B was analyzed by SDS-PAGE gel and Coomassie Blue Staining.