

## Product datasheet for **TP762297**

### GPRC6A (NM\_148963) Human Recombinant Protein

#### Product data:

Product Type:	Recombinant Proteins
Description:	Purified recombinant protein of Human G protein-coupled receptor, family C, group 6, member A (GPRC6A), Gln19-Gln270, with N-terminal His tag, expressed in E.coli, 50ug
Species:	Human
Expression Host:	E. coli
Expression cDNA Clone or AA Sequence:	A DNA sequence encoding the region(Gln19-Gln270) of GPRC6A
Tag:	N-His
Predicted MW:	28.2 kDa
Concentration:	>0.05 µg/µL as determined by microplate BCA method
Purity:	> 80% as determined by SDS-PAGE and Coomassie blue staining
Buffer:	50 mM Tris-HCl, pH 8.0, 8 M urea
Note:	For testing in cell culture applications, please filter before use. Note that you may experience some loss of protein during the filtration process.
Storage:	Store at -80°C after receiving vials.
Stability:	Stable for 12 months from the date of receipt of the product under proper storage and handling conditions. Avoid repeated freeze-thaw cycles.
RefSeq:	<a href="#">NP_683766</a>
Locus ID:	222545
UniProt ID:	<a href="#">Q5T6X5</a>
RefSeq Size:	2860
Cytogenetics:	6q22.1
RefSeq ORF:	2778
Synonyms:	bA86F4.3; GPCR



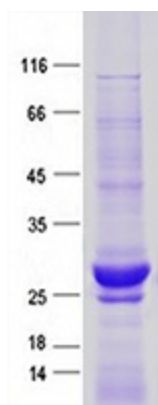
[View online »](#)

**Summary:**

Members of family C of the G protein-coupled receptor (GPCR) superfamily, such as GPRC6A, are characterized by an evolutionarily conserved amino acid-sensing motif linked to an intramembranous 7-transmembrane loop region. Several members of GPCR family C, including GPRC6A, also have a long N-terminal domain (summary by Pi et al., 2005 [PubMed 16199532]).[supplied by OMIM, Nov 2010]

**Protein Families:**

Druggable Genome, Transmembrane

**Product images:**

Purified recombinant protein GPRC6A was analyzed by SDS-PAGE gel and Coomassie Blue Staining.