

Product datasheet for **TP762296**

CLCA1 (NM_001285) Human Recombinant Protein

Product data:

Product Type:	Recombinant Proteins
Description:	Purified recombinant protein of Human chloride channel accessory 1 (CLCA1), Val344-Asp412, with N-terminal His-ABP tag, expressed in E.coli, 50ug
Species:	Human
Expression Host:	E. coli
Expression cDNA Clone or AA Sequence:	A DNA sequence encoding the region(Val344-Asp412) of CLCA1
Tag:	N-His-ABP (Albumin-Binding Protein)
Predicted MW:	22.6 kDa
Concentration:	>0.05 µg/µL as determined by microplate BCA method
Purity:	> 80% as determined by SDS-PAGE and Coomassie blue staining
Buffer:	50 mM Tris-HCl, pH 8.0, 8 M urea
Note:	For testing in cell culture applications, please filter before use. Note that you may experience some loss of protein during the filtration process.
Storage:	Store at -80°C after receiving vials.
Stability:	Stable for 12 months from the date of receipt of the product under proper storage and handling conditions. Avoid repeated freeze-thaw cycles.
RefSeq:	NP_001276
Locus ID:	1179
UniProt ID:	A8K7I4
RefSeq Size:	3311
Cytogenetics:	1p22.3
RefSeq ORF:	2742
Synonyms:	CACC; CaCC-1; CACC1; CLCRG1; GOB5; hCaCC-1; hCLCA1



[View online »](#)

Summary:

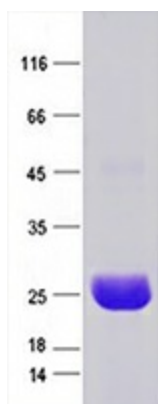
This gene encodes a member of the calcium sensitive chloride conductance protein family. To date, all members of this gene family map to the same region on chromosome 1p31-p22 and share a high degree of homology in size, sequence, and predicted structure, but differ significantly in their tissue distributions. The encoded protein is expressed as a precursor protein that is processed into two cell-surface-associated subunits, although the site at which the precursor is cleaved has not been precisely determined. The encoded protein may be involved in mediating calcium-activated chloride conductance in the intestine. [provided by RefSeq, Jul 2008]

Protein Families:

Druggable Genome, Ion Channels: Other

Protein Pathways:

Olfactory transduction

Product images:

Purified recombinant protein CLCA1 was analyzed by SDS-PAGE gel and Coomassie Blue Staining.