

Product datasheet for **TP762294**

DOT1L (NM_032482) Human Recombinant Protein

Product data:

| | |
|---------------------------------------|--|
| Product Type: | Recombinant Proteins |
| Description: | Purified recombinant protein of Human DOT1-like, histone H3 methyltransferase (<i>S. cerevisiae</i>) (DOT1L), Met1-Asp434, with N-terminal His tag, expressed in E.coli, 50ug |
| Species: | Human |
| Expression Host: | E. coli |
| Expression cDNA Clone or AA Sequence: | A DNA sequence encoding the region(Met1-Asp434) of DOT1L |
| Tag: | N-His |
| Predicted MW: | 49.5 kDa |
| Concentration: | >0.05 µg/µL as determined by microplate BCA method |
| Purity: | > 80% as determined by SDS-PAGE and Coomassie blue staining |
| Buffer: | 50 mM Tris-HCl, pH 8.0, 8 M urea |
| Note: | For testing in cell culture applications, please filter before use. Note that you may experience some loss of protein during the filtration process. |
| Storage: | Store at -80°C after receiving vials. |
| Stability: | Stable for 12 months from the date of receipt of the product under proper storage and handling conditions. Avoid repeated freeze-thaw cycles. |
| RefSeq: | NP_115871 |
| Locus ID: | 84444 |
| UniProt ID: | Q8TEK3 |
| RefSeq Size: | 4889 |
| Cytogenetics: | 19p13.3 |
| RefSeq ORF: | 4611 |
| Synonyms: | DOT1; KMT4 |
| Summary: | The protein encoded by this gene is a histone methyltransferase that methylates lysine-79 of histone H3. It is inactive against free core histones, but shows significant histone methyltransferase activity against nucleosomes. [provided by RefSeq, Aug 2011] |

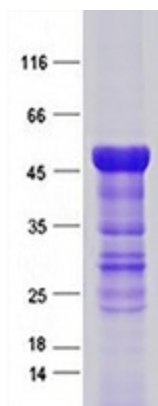


[View online »](#)

Protein Families: Druggable Genome

Protein Pathways: Lysine degradation

Product images:



Purified recombinant protein DOT1L was analyzed by SDS-PAGE gel and Coomossie Blue Staining.