

Product datasheet for **TP762272**

Sulfatase 1 (SULF1) (NM_015170) Human Recombinant Protein

Product data:

Product Type:	Recombinant Proteins
Description:	Purified recombinant protein of Human sulfatase 1 (SULF1), transcript variant 3, Gln487-Cys746, with N-terminal His tag, expressed in E.coli, 50ug
Species:	Human
Expression Host:	E. coli
Expression cDNA Clone or AA Sequence:	A DNA sequence encoding the region(Gln487-Cys746) of SULF1
Tag:	N-His
Predicted MW:	30.6 kDa
Concentration:	>0.05 µg/µL as determined by microplate BCA method
Purity:	> 80% as determined by SDS-PAGE and Coomassie blue staining
Buffer:	50 mM Tris-HCl, pH 8.0, 8 M urea
Note:	For testing in cell culture applications, please filter before use. Note that you may experience some loss of protein during the filtration process.
Storage:	Store at -80°C.
Stability:	Stable for 12 months from the date of receipt of the product under proper storage and handling conditions. Avoid repeated freeze-thaw cycles.
RefSeq:	NP_055985
Locus ID:	23213
UniProt ID:	Q8IWU6 , A0A024R809
RefSeq Size:	5699
Cytogenetics:	8q13.2-q13.3
RefSeq ORF:	2613
Synonyms:	SULF-1



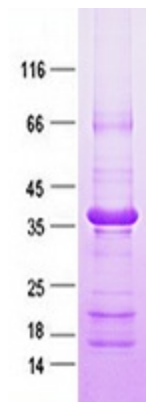
[View online »](#)

Summary:

This gene encodes an extracellular heparan sulfate endosulfatase. The encoded enzyme selectively removes 6-O-sulfate groups from heparan sulfate chains of heparan sulfate proteoglycans (HSPGs). The enzyme is secreted through the Golgi and is subsequently localized to the cell surface. The expression of this gene may be down-regulated in several types of cancer, including hepatocellular (HCC), ovarian and breast cancers. Alternative splicing results in multiple transcript variants. [provided by RefSeq, Aug 2013]

Protein Families:

Druggable Genome

Product images:

Purified recombinant protein SULF1 was analyzed by SDS-PAGE gel and Coomassie Blue Staining.