

## Product datasheet for **TP762268**

### SIX3 (NM\_005413) Human Recombinant Protein

#### Product data:

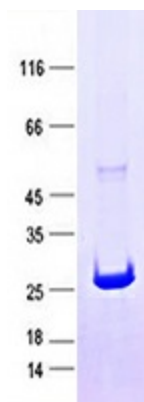
Product Type:	Recombinant Proteins
Description:	Purified recombinant protein of Human SIX homeobox 3 (SIX3), Thr142-End, with N-terminal His tag, expressed in E.coli, 50ug
Species:	Human
Expression Host:	E. coli
Expression cDNA Clone or AA Sequence:	A DNA sequence encoding the region(Thr142-End) of SIX3
Tag:	N-His
Predicted MW:	21.6 kDa
Concentration:	>0.05 µg/µL as determined by microplate BCA method
Purity:	> 80% as determined by SDS-PAGE and Coomassie blue staining
Buffer:	50 mM Tris-HCl, pH 8.0, 8 M urea
Note:	For testing in cell culture applications, please filter before use. Note that you may experience some loss of protein during the filtration process.
Storage:	Store at -80°C.
Stability:	Stable for 12 months from the date of receipt of the product under proper storage and handling conditions. Avoid repeated freeze-thaw cycles.
RefSeq:	<a href="#">NP_005404</a>
Locus ID:	6496
UniProt ID:	<a href="#">O95343</a>
RefSeq Size:	1926
Cytogenetics:	2p21
RefSeq ORF:	996
Synonyms:	HPE2
Summary:	This gene encodes a member of the sine oculis homeobox transcription factor family. The encoded protein plays a role in eye development. Mutations in this gene have been associated with holoprosencephaly type 2. [provided by RefSeq, Oct 2009]



[View online »](#)

Protein Families: Druggable Genome

### Product images:



Purified recombinant protein SIX3 was analyzed by SDS-PAGE gel and Coomassie Blue Staining.