

## Product datasheet for **TP762263**

### **BORIS (CTCFL) (NM\_080618) Human Recombinant Protein**

#### **Product data:**

<b>Product Type:</b>	Recombinant Proteins
<b>Description:</b>	Purified recombinant protein of Human CCCTC-binding factor (zinc finger protein)-like (CTCFL), Glu282-Thr435, with N-terminal His tag, expressed in E.coli, 50ug
<b>Species:</b>	Human
<b>Expression Host:</b>	E. coli
<b>Expression cDNA Clone or AA Sequence:</b>	A DNA sequence encoding the region(Glu282-Thr435) of CTCFL
<b>Tag:</b>	N-His
<b>Predicted MW:</b>	18.1 kDa
<b>Concentration:</b>	>0.05 µg/µL as determined by microplate BCA method
<b>Purity:</b>	> 80% as determined by SDS-PAGE and Coomassie blue staining
<b>Buffer:</b>	50 mM Tris-HCl, pH 8.0, 8 M urea
<b>Note:</b>	For testing in cell culture applications, please filter before use. Note that you may experience some loss of protein during the filtration process.
<b>Storage:</b>	Store at -80°C.
<b>Stability:</b>	Stable for 12 months from the date of receipt of the product under proper storage and handling conditions. Avoid repeated freeze-thaw cycles.
<b>RefSeq:</b>	<a href="#">NP_542185</a>
<b>Locus ID:</b>	140690
<b>UniProt ID:</b>	<a href="#">Q8NI51</a>
<b>RefSeq Size:</b>	3493
<b>Cytogenetics:</b>	20q13.31
<b>RefSeq ORF:</b>	1989
<b>Synonyms:</b>	BORIS; CT27; CTCF-T; dj579F20.2; HMGB1L1



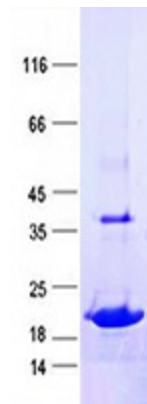
[View online »](#)

**Summary:**

CCCTC-binding factor (CTCF), an 11-zinc-finger factor involved in gene regulation, utilizes different zinc fingers to bind varying DNA target sites. CTCF forms methylation-sensitive insulators that regulate X-chromosome inactivation. This gene is a paralog of CTCF and appears to be expressed primarily in the cytoplasm of spermatocytes, unlike CTCF which is expressed primarily in the nucleus of somatic cells. CTCF and the protein encoded by this gene are normally expressed in a mutually exclusive pattern that correlates with resetting of methylation marks during male germ cell differentiation. Multiple alternatively spliced transcript variants encoding different isoforms have been found for this gene. [provided by RefSeq, Jun 2012]

**Protein Families:**

Transcription Factors

**Product images:**

Purified recombinant protein CTCFL was analyzed by SDS-PAGE gel and Coomassie Blue Staining.