

Product datasheet for **TP762255**

TLR5 (NM_003268) Human Recombinant Protein

Product data:

Product Type:	Recombinant Proteins
Description:	Purified recombinant protein of Human toll-like receptor 5 (TLR5), Leu258-Ser404, with N-terminal His-ABP tag, expressed in E.coli, 50ug
Species:	Human
Expression Host:	E. coli
Expression cDNA Clone or AA Sequence:	A DNA sequence encoding the region(Leu258-Ser404) of TLR5
Tag:	N-His-ABP (Albumin-Binding Protein)
Predicted MW:	32.1 kDa
Concentration:	>0.05 µg/µL as determined by microplate BCA method
Purity:	> 80% as determined by SDS-PAGE and Coomassie blue staining
Buffer:	50 mM Tris-HCl, pH 8.0, 8 M urea
Note:	For testing in cell culture applications, please filter before use. Note that you may experience some loss of protein during the filtration process.
Storage:	Store at -80°C.
Stability:	Stable for 12 months from the date of receipt of the product under proper storage and handling conditions. Avoid repeated freeze-thaw cycles.
RefSeq:	NP_003259
Locus ID:	7100
UniProt ID:	O60602 , A0A2R8Y7Z4
RefSeq Size:	3369
Cytogenetics:	1q41
RefSeq ORF:	2574
Synonyms:	MELIOS; SLE1; SLEB1; TIL3



[View online »](#)

Summary:

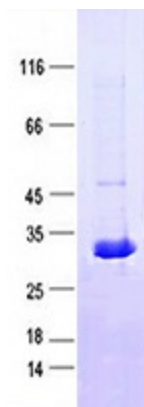
This gene encodes a member of the toll-like receptor (TLR) family, which plays a fundamental role in pathogen recognition and activation of innate immune responses. These receptors recognize distinct pathogen-associated molecular patterns that are expressed on infectious agents. The protein encoded by this gene recognizes bacterial flagellin, the principal component of bacterial flagella and a virulence factor. The activation of this receptor mobilizes the nuclear factor NF-kappaB, which in turn activates a host of inflammatory-related target genes. Mutations in this gene have been associated with both resistance and susceptibility to systemic lupus erythematosus, and susceptibility to Legionnaire disease. [provided by RefSeq, Dec 2009]

Protein Families:

Druggable Genome, Transmembrane

Protein Pathways:

Pathogenic Escherichia coli infection, Toll-like receptor signaling pathway

Product images:

Purified recombinant protein TLR5 was analyzed by SDS-PAGE gel and Coomossie Blue Staining.