

Product datasheet for **TP762239**

NSD3 (WHSC1L1) (NM_017778) Human Recombinant Protein

Product data:

Product Type:	Recombinant Proteins
Description:	Purified recombinant protein of Human Wolf-Hirschhorn syndrome candidate 1-like 1 (WHSC1L1), transcript variant short, Asn427-Ser566, with N-terminal His-ABP tag, expressed in E.coli, 50ug
Species:	Human
Expression Host:	E. coli
Expression cDNA Clone or AA Sequence:	A DNA sequence encoding the region(Asn427-Ser566) of WHSC1L1
Tag:	N-His-ABP (Albumin-Binding Protein)
Predicted MW:	30.7 kDa
Concentration:	>0.05 µg/µL as determined by microplate BCA method
Purity:	> 80% as determined by SDS-PAGE and Coomassie blue staining
Buffer:	50 mM Tris-HCl, pH 8.0, 8 M urea
Note:	For testing in cell culture applications, please filter before use. Note that you may experience some loss of protein during the filtration process.
Storage:	Store at -80°C.
Stability:	Stable for 12 months from the date of receipt of the product under proper storage and handling conditions. Avoid repeated freeze-thaw cycles.
RefSeq:	NP_060248
Locus ID:	54904
UniProt ID:	Q9BZ95
RefSeq Size:	3995
Cytogenetics:	8p11.23
RefSeq ORF:	1935
Synonyms:	KMT3F; KMT3G; pp14328; WHISTLE; WHSC1L1



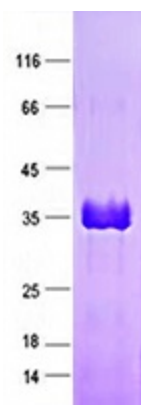
[View online »](#)

Summary: This gene is related to the Wolf-Hirschhorn syndrome candidate-1 gene and encodes a protein with PWWP (proline-tryptophan-tryptophan-proline) domains. This protein methylates histone H3 at lysine residues 4 and 27, which represses gene transcription. Two alternatively spliced variants have been described. [provided by RefSeq, May 2015]

Protein Families: Druggable Genome, Transcription Factors

Protein Pathways: Lysine degradation

Product images:



Purified recombinant protein WHSC1L1 was analyzed by SDS-PAGE gel and Coomassie Blue Staining.