

Product datasheet for **TP762237**

CD49b (ITGA2) (NM_002203) Human Recombinant Protein

Product data:

Product Type:	Recombinant Proteins
Description:	Purified recombinant protein of Human integrin, alpha 2 (CD49B, alpha 2 subunit of VLA-2 receptor) (ITGA2), Asp203-Val466, with N-terminal His tag, expressed in E.coli, 50ug
Species:	Human
Expression Host:	E. coli
Expression cDNA Clone or AA Sequence:	A DNA sequence encoding the region(Asp203-Val466) of ITGA2
Tag:	N-His
Predicted MW:	28.6 kDa
Concentration:	>0.05 µg/µL as determined by microplate BCA method
Purity:	> 80% as determined by SDS-PAGE and Coomassie blue staining
Buffer:	50 mM Tris-HCl, pH 8.0, 8 M urea
Note:	For testing in cell culture applications, please filter before use. Note that you may experience some loss of protein during the filtration process.
Storage:	Store at -80°C.
Stability:	Stable for 12 months from the date of receipt of the product under proper storage and handling conditions. Avoid repeated freeze-thaw cycles.
RefSeq:	NP_002194
Locus ID:	3673
UniProt ID:	P17301
RefSeq Size:	5361
Cytogenetics:	5q11.2
RefSeq ORF:	3543
Synonyms:	BR; CD49B; GPIa; HPA-5; VLA-2; VLAA2



[View online »](#)

Summary:

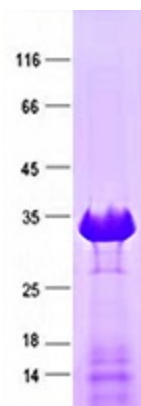
This gene encodes the alpha subunit of a transmembrane receptor for collagens and related proteins. The encoded protein forms a heterodimer with a beta subunit and mediates the adhesion of platelets and other cell types to the extracellular matrix. Loss of the encoded protein is associated with bleeding disorder platelet-type 9. Antibodies against this protein are found in several immune disorders, including neonatal alloimmune thrombocytopenia. This gene is located adjacent to a related alpha subunit gene. Alternative splicing results in multiple transcript variants. [provided by RefSeq, Aug 2012]

Protein Families:

Druggable Genome, Transmembrane

Protein Pathways:

Arrhythmogenic right ventricular cardiomyopathy (ARVC), Dilated cardiomyopathy, ECM-receptor interaction, Focal adhesion, Hematopoietic cell lineage, Hypertrophic cardiomyopathy (HCM), Pathways in cancer, Regulation of actin cytoskeleton, Small cell lung cancer

Product images:

Purified recombinant protein ITGA2 was analyzed by SDS-PAGE gel and Coomassie Blue Staining.