

Product datasheet for **TP762236**

IL20 Receptor alpha (IL20RA) (NM_014432) Human Recombinant Protein

Product data:

Product Type:	Recombinant Proteins
Description:	Purified recombinant protein of Human interleukin 20 receptor, alpha (IL20RA), Ser272-End, with N-terminal His tag, expressed in E.coli, 50ug
Species:	Human
Expression Host:	E. coli
Expression cDNA Clone or AA Sequence:	A DNA sequence encoding the region(Ser272-End) of IL20RA
Tag:	N-His
Predicted MW:	31.7 kDa
Concentration:	>0.05 µg/µL as determined by microplate BCA method
Purity:	> 80% as determined by SDS-PAGE and Coomassie blue staining
Buffer:	50 mM Tris-HCl, pH 8.0, 8 M urea
Note:	For testing in cell culture applications, please filter before use. Note that you may experience some loss of protein during the filtration process.
Storage:	Store at -80°C.
Stability:	Stable for 12 months from the date of receipt of the product under proper storage and handling conditions. Avoid repeated freeze-thaw cycles.
RefSeq:	NP_055247
Locus ID:	53832
UniProt ID:	Q9UHF4
RefSeq Size:	3701
Cytogenetics:	6q23.3
RefSeq ORF:	1659
Synonyms:	CRF2-8; IL-20R-alpha; IL-20R1; IL-20RA



[View online »](#)

Summary:

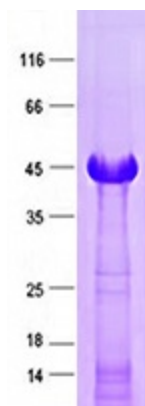
This gene encodes a member of the type II cytokine receptor family. The encoded protein is a subunit of the receptor for interleukin 20, a cytokine that may be involved in epidermal function. The interleukin 20 receptor is a heterodimeric complex consisting of the encoded protein and interleukin 20 receptor beta. This gene and interleukin 20 receptor beta are highly expressed in skin, and are upregulated in psoriasis. Alternative splicing results in multiple transcript variants. [provided by RefSeq, Jul 2013]

Protein Families:

Druggable Genome, Transmembrane

Protein Pathways:

Cytokine-cytokine receptor interaction, Jak-STAT signaling pathway

Product images:

Purified recombinant protein IL20RA was analyzed by SDS-PAGE gel and Coomassie Blue Staining.