

Product datasheet for **TP762228**

Eotaxin 3 (CCL26) (NM_006072) Human Recombinant Protein

Product data:

Product Type:	Recombinant Proteins
Description:	Purified recombinant protein of Human chemokine (C-C motif) ligand 26 (CCL26), Thr24-End, with N-terminal His tag, expressed in E.coli, 50ug
Species:	Human
Expression Host:	E. coli
Expression cDNA Clone or AA Sequence:	A DNA sequence encoding the region(Thr24-End) of CCL26
Tag:	N-His
Predicted MW:	8.4 kDa
Concentration:	>0.05 µg/µL as determined by microplate BCA method
Purity:	> 80% as determined by SDS-PAGE and Coomassie blue staining
Buffer:	50 mM Tris-HCl, pH 8.0, 8 M urea
Note:	For testing in cell culture applications, please filter before use. Note that you may experience some loss of protein during the filtration process.
Storage:	Store at -80°C.
Stability:	Stable for 12 months from the date of receipt of the product under proper storage and handling conditions. Avoid repeated freeze-thaw cycles.
RefSeq:	NP_006063
Locus ID:	10344
UniProt ID:	Q9Y258
RefSeq Size:	562
Cytogenetics:	7q11.23
RefSeq ORF:	282
Synonyms:	IMAC; MIP-4a; MIP-4alpha; SCYA26; TSC-1



[View online »](#)

Summary:

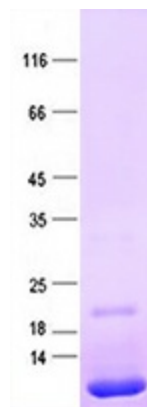
This gene is one of two Cys-Cys (CC) cytokine genes clustered on the q arm of chromosome 7. Cytokines are a family of secreted proteins involved in immunoregulatory and inflammatory processes. The CC cytokines are proteins characterized by two adjacent cysteines. The cytokine encoded by this gene displays chemotactic activity for normal peripheral blood eosinophils and basophils. This protein also has antimicrobial activity, displaying an antibacterial effect on *S. pneumoniae*, *S. aureus*, Non-typeable *H. influenzae*, and *P. aeruginosa*. The product of this gene is one of three related chemokines that specifically activate chemokine receptor CCR3. This chemokine may contribute to the eosinophil accumulation in atopic diseases. [provided by RefSeq, Jul 2020]

Protein Families:

Druggable Genome, Secreted Protein

Protein Pathways:

Chemokine signaling pathway, Cytokine-cytokine receptor interaction

Product images:

Purified recombinant protein CCL26 was analyzed by SDS-PAGE gel and Coomassie Blue Staining.