

Product datasheet for **TP762221**

ECT2 (NM_018098) Human Recombinant Protein

Product data:

Product Type:	Recombinant Proteins
Description:	Purified recombinant protein of Human epithelial cell transforming sequence 2 oncogene (ECT2), Ile175-Asn438, with N-terminal His tag, expressed in E.coli, 50ug
Species:	Human
Expression Host:	E. coli
Expression cDNA Clone or AA Sequence:	A DNA sequence encoding the region(Ile175-Asn438) of ABCD2
Tag:	N-His
Predicted MW:	30.3 kDa
Concentration:	>0.05 µg/µL as determined by microplate BCA method
Purity:	> 80% as determined by SDS-PAGE and Coomassie blue staining
Buffer:	50 mM Tris-HCl, pH 8.0, 8 M urea
Note:	For testing in cell culture applications, please filter before use. Note that you may experience some loss of protein during the filtration process.
Storage:	Store at -80°C.
Stability:	Stable for 12 months from the date of receipt of the product under proper storage and handling conditions. Avoid repeated freeze-thaw cycles.
RefSeq:	NP_060568
Locus ID:	1894
UniProt ID:	Q9H8V3
RefSeq Size:	3916
Cytogenetics:	3q26.31
RefSeq ORF:	2649
Synonyms:	ARHGEF31



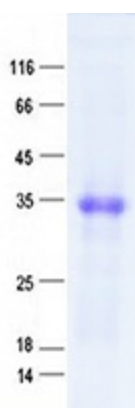
[View online »](#)

Summary:

The protein encoded by this gene is a guanine nucleotide exchange factor and transforming protein that is related to Rho-specific exchange factors and yeast cell cycle regulators. The expression of this gene is elevated with the onset of DNA synthesis and remains elevated during G2 and M phases. In situ hybridization analysis showed that expression is at a high level in cells undergoing mitosis in regenerating liver. Thus, this protein is expressed in a cell cycle-dependent manner during liver regeneration, and is thought to have an important role in the regulation of cytokinesis. Several transcript variants encoding different isoforms have been found for this gene. [provided by RefSeq, Mar 2017]

Protein Families:

Druggable Genome

Product images:

Purified recombinant protein ECT2 was analyzed by SDS-PAGE gel and Coomassie Blue Staining.