

Product datasheet for **TP762216**

EPLIN (LIMA1) (NM_016357) Human Recombinant Protein

Product data:

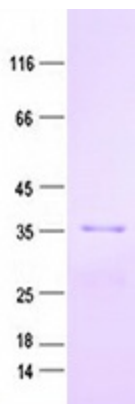
Product Type:	Recombinant Proteins
Description:	Purified recombinant protein of Human LIM domain and actin binding 1 (LIMA1), transcript variant b, Met1-Gln275, with N-terminal His tag, expressed in E.coli, 50ug
Species:	Human
Expression Host:	E. coli
Expression cDNA Clone or AA Sequence:	A DNA sequence encoding the region(Met1-Gln275) of LIMA1
Tag:	N-His
Predicted MW:	31.2 kDa
Concentration:	>0.05 µg/µL as determined by microplate BCA method
Purity:	> 80% as determined by SDS-PAGE and Coomassie blue staining
Buffer:	50 mM Tris-HCl, pH 8.0, 8 M urea
Note:	For testing in cell culture applications, please filter before use. Note that you may experience some loss of protein during the filtration process.
Storage:	Store at -80°C.
Stability:	Stable for 12 months from the date of receipt of the product under proper storage and handling conditions. Avoid repeated freeze-thaw cycles.
RefSeq:	NP_057441
Locus ID:	51474
UniProt ID:	Q9UHB6
RefSeq Size:	3664
Cytogenetics:	12q13.12
RefSeq ORF:	2277
Synonyms:	EPLIN; LDLCQ8; SREBP3



[View online »](#)

Summary:

This gene encodes a cytoskeleton-associated protein that inhibits actin filament depolymerization and cross-links filaments in bundles. It is downregulated in some cancer cell lines. Alternatively spliced transcript variants encoding different isoforms have been described for this gene, and expression of some of the variants maybe independently regulated. [provided by RefSeq, Aug 2011]

Product images:

Purified recombinant protein LIMA1 was analyzed by SDS-PAGE gel and Coomossie Blue Staining.