

## Product datasheet for **TP762200**

### PON3 (NM\_000940) Human Recombinant Protein

#### Product data:

|                                       |  |
|---------------------------------------|--|
| Product Type:                         | Recombinant Proteins   |
| Description:                          | Purified recombinant protein of Human paraoxonase 3 (PON3), Ala30-Val319, with N-terminal His tag, expressed in E.coli, 50ug                         |
| Species:                              | Human  |
| Expression Host:                      | E. coli  |
| Expression cDNA Clone or AA Sequence: | A DNA sequence encoding the region(Ala30-Val319) of PON3   |
| Tag:                                  | N-His  |
| Predicted MW:                         | 32.7 kDa   |
| Concentration:                        | >0.05 µg/µL as determined by microplate BCA method   |
| Purity:                               | > 80% as determined by SDS-PAGE and Coomassie blue staining  |
| Buffer:                               | 50 mM Tris-HCl, pH 8.0, 8 M urea   |
| Note:                                 | For testing in cell culture applications, please filter before use. Note that you may experience some loss of protein during the filtration process. |
| Storage:                              | Store at -80°C.  |
| Stability:                            | Stable for 12 months from the date of receipt of the product under proper storage and handling conditions. Avoid repeated freeze-thaw cycles.        |
| RefSeq:                               | <a href="#">NP_000931</a>  |
| Locus ID:                             | 5446   |
| UniProt ID:                           | <a href="#">Q15166</a>   |
| RefSeq Size:                          | 1201   |
| Cytogenetics:                         | 7q21.3   |
| RefSeq ORF:                           | 1062   |



[View online »](#)

**Summary:**

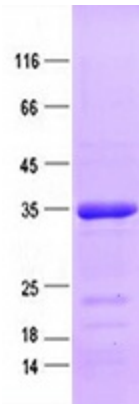
This gene is a member of the paraoxonase family and lies in a cluster on chromosome 7 with the other two family members. The encoded protein is secreted into the bloodstream and associates with high-density lipoprotein (HDL). The protein also rapidly hydrolyzes lactones and can inhibit the oxidation of low-density lipoprotein (LDL), a function that is believed to slow the initiation and progression of atherosclerosis. Alternatively spliced variants which encode different protein isoforms have been described; however, only one has been fully characterized. [provided by RefSeq, Jul 2008]

**Protein Families:**

Secreted Protein, Transmembrane

**Protein Pathways:**

Metabolic pathways

**Product images:**

Purified recombinant protein PON3 was analyzed by SDS-PAGE gel and Coomossie Blue Staining.