

## Product datasheet for **TP762199**

### Repulsive Guidance Molecule B (RGMB) (NM\_001012761) Human Recombinant Protein

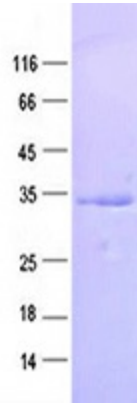
#### Product data:

Product Type:	Recombinant Proteins
Description:	Purified recombinant protein of Human RGM domain family, member B (RGMB), Ser169-Phe410, with N-terminal His tag, expressed in E.coli, 50ug
Species:	Human
Expression Host:	E. coli
Expression cDNA Clone or AA Sequence:	A DNA sequence encoding the region(Ser169-Phe410) of RGMB
Tag:	N-His
Predicted MW:	26.8 kDa
Concentration:	>0.05 µg/µL as determined by microplate BCA method
Purity:	> 80% as determined by SDS-PAGE and Coomassie blue staining
Buffer:	50 mM Tris-HCl, pH 8.0, 8 M urea
Note:	For testing in cell culture applications, please filter before use. Note that you may experience some loss of protein during the filtration process.
Storage:	Store at -80°C.
Stability:	Stable for 12 months from the date of receipt of the product under proper storage and handling conditions. Avoid repeated freeze-thaw cycles.
RefSeq:	<a href="#">NP_001012779</a>
Locus ID:	285704
UniProt ID:	<a href="#">Q6NW40</a>
RefSeq Size:	4601
Cytogenetics:	5q15
RefSeq ORF:	1434
Synonyms:	DRAGON
Summary:	RGMB is a glycosylphosphatidylinositol (GPI)-anchored member of the repulsive guidance molecule family (see RGMA, MIM 607362) and contributes to the patterning of the developing nervous system (Samad et al., 2005 [PubMed 15671031]).[supplied by OMIM, Apr 2009]



[View online »](#)

**Product images:**



Purified recombinant protein RGMB was analyzed by SDS-PAGE gel and Coomassie Blue Staining.